

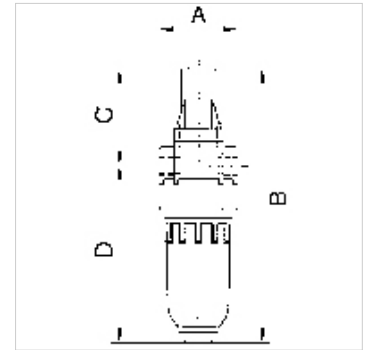
# K-NEBELOELER PC-BEHÄEL STANDARD-MINI

Oil-mist lubricators with polycarbonate bowl

**HANSA FLEX**

## Osobine

|                           |  |
|---------------------------|--|
| Ulazni pritisak           | Max. 16 bar (polycarbonate bowl), Max. 25 bar (metal bowl) |
| Temperatura medija        | max. 60 °C   |
| Temperatura okoline       | Max. 60 °C   |
| Protok                    | 650 l/min  |
| Zaptivni materijal        | NBR  |
| Kućište                   | Die-cast zinc, painted silver                              |
| Naglavak za kapljanje     | PA (polycarbonate bowl), Zinc-glass-NBR (metal bowl)       |
| Vrsta ulja                | CL 32 acc. to DIN 51517 - ISO VG 32                        |
| Merenje vrednosti protoka | At P1 = 6 bar and pressure drop $\Delta p = 1$ bar         |
| Ostali podaci             | User manual on request                                     |



## Opis

Proportional lubricators in compact design, oil can be filled under pressure.

## Artikal

| Naziv          | Navoj | A<br>(mm) | B        | C<br>(mm) | D<br>(mm) | DN |
|----------------|-------|-----------|----------|-----------|-----------|----|
| K- 07 25 08 83 | G 1/8 | 40,0      | 144,5 mm | 49,5      | 95,0      | 5  |
| K- 07 25 08 85 | G 1/4 | 40,0      | 144,5 mm | 49,5      | 95,0      | 5  |

## Rezervni delovi

|                              |   |
|------------------------------|---|
| K-ERSATZBEHÄELTER MULTI MINI | Spare tank »multifix-mini« & »standard-mini«              |
| K-TROPFAUFSATZ POLYCARBO     | Drip attachment polycarbonate                             |
| K-TROPFAUFSATZ METALL        | Drip attachment metal                                     |
| K-LOESBARE DOPPELNIPPEL MS   | Double nipples  |
| K-XV AGM MS NI               | Double nipples, parallel male thread, nickel-plated brass |