

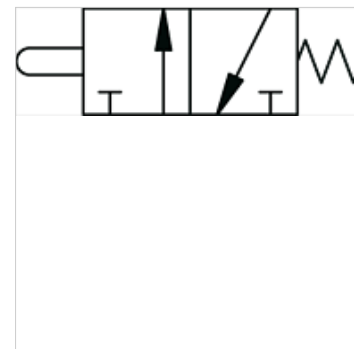
K-WMV 3/2 MANU DRUCKKNOPF

3/2-way miniature valves, manually operated, with pushbutton

HANSA FLEX

Osobine

Funkcija	NC
Radni pritisak	0,5 - 10 bara
Radna temperatura	-10 °C do +60 °C
Protok 6bara i 5bara	35 NI/min
Nominalni-Ø	2,5 mm
Pritisak aktivacije 6bara	8 N
Telo ventila	Aluminijum
Pritisni taster	Mesing, niklovan
Opruga	nerđajajući čelik
Zaptivni materijal	NBR



Napomena

Ostali podaci na upit.

Opis

Monostable (non-latching) and bistable (latching) versions available.

Artikal

Naziv	Priključak	Aktiviranje	Ploča
K- 07 15 00 50	4 mm bočno	monostable	Black
K- 07 15 00 51	4 mm bočno	monostable	Red
K- 07 15 00 52	M 5 bočno	monostable	Black
K- 07 15 00 53	M 5 bočno	monostable	Red