

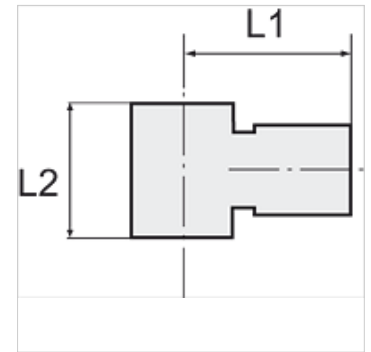
K-L-RINGSTUECK

Ring nipples, single

HANSA FLEX

Osobine

Pulsirajući radni pritisak	Max. 10 bar
Pritisak	Max. 15 bar (depending on pipe quality)
pogodan materijal cevi	PVDF, PTFE, stainless steel, PA, PU
Norma	G thread acc. to DIN EN ISO 228-1
Temperatura okoline	-20 °C to max. +150 °C (depending on pipe quality and diameter)
Materijal	Plemeniti čelik 1.4404
Zaptivni materijal	FKM



Napomena

Ostali podaci na upit.

Opis

For use with aggressive media and in areas with corrosive outside influences, in the food processing industry and in hygienic and sanitary applications.

Artikal

Naziv	Navoj	Ø mm za crevo spolja	L1 (mm)	L2 (mm)
K- 07 40 47 10	G 1/8	4 mm	19,5	15,0
K- 07 40 47 11	G 1/8	6 mm	22,0	15,0
K- 07 40 47 12	G 1/8	8 mm	22,5	15,0
K- 07 40 47 08	G 1/4	6 mm	23,5	17,0
K- 07 40 47 09	G 1/4	8 mm	24,0	17,0
K- 07 40 47 07	G 1/4	10 mm	27,0	17,0
K- 07 40 47 13	G 3/8	10 mm	29,0	20,0
K- 07 40 47 14	G 3/8	12 mm	31,0	20,0
K- 07 40 47 06	G 1/2	12 mm	33,0	24,0