

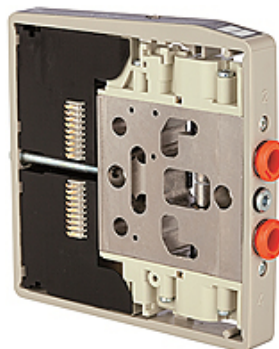
K-VENTILSCHEIBE HDM 6

Valve discs for HDM valve terminal with 6 mm port

HANSA FLEX

Osobine

Mediji	Filtered, unlubricated or lubricated compressed air. If lubrication is used, it must be continuous.
Radni pritisak	Max. vacuum 10 bar (external pilots), 3 to 7 bar (internal pilots as standard)
Upravljački pritisak	3 - 7 bar
Temperaturni opseg	-10 °C to +60 °C
Protok	200 NI/min (Ø 4), 500 NI/min (Ø 6), 800 NI/min (Ø 8)
Broj upravljanja	Max. 16 (e.g. 16 spring return valves)
Ručno pomoćno aktiviranje	Latching (bistable), Monostable (non-latching) version also available on request
Apsorbovanje snage	0.6 W per pilot
Vrsta zaštite	IP 65



Napomena

Ostali podaci na upit.

Opis

These compact valve terminals, with a maximum flow rate of 800 NI/min, can be individually adapted to the specific conditions of each application thanks to the wide range of functions and various input and intermediate plates. Since each valve terminal is a customer-specific combination of a series of individual elements, the catalogue only lists the available input, intermediate and end plates as well as the different valve discs and the 25-pin multi-pole connectors.

Dodatne informacije

Important: The scope of supply does not include a connector. Please order separately.

Artikal

Naziv	Funkcija
K- 07 15 20 60	2 x 3/2-way, NC, monostable or 5/3-way, mid-position exhausted
K- 07 15 20 67	2 x 3/2-way, NO, monostable or 5/3-way, mid-position pressurised
K- 07 15 20 62	3/2-way, NC, monostable and 3/2-way, NO, monostable
K- 07 15 20 66	5/2-way, monostable
K- 07 15 20 59	5/2-way, monostable (uses only one pin, two signals assigned)
K- 07 15 20 61	5/2-way, bistable (pulse valve)
K- 07 15 20 64	5/3-way, mid-position closed