

K-UEM MS NI

Hexagonal swivel nuts - nickel plated brass

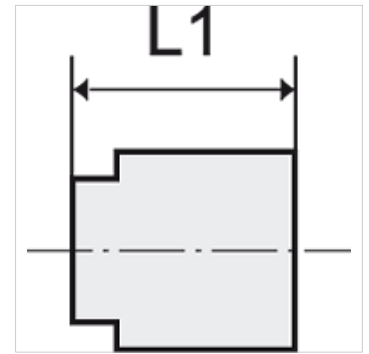
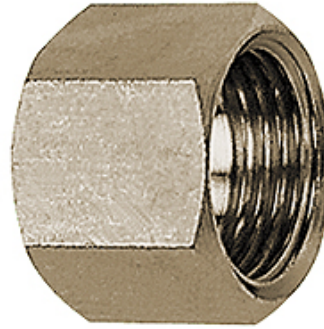
HANSA FLEX

Osobine

Radna temperatura Max. 150 °C

Pritisak Max. 60 bar

Materijal Mesing, niklovan



Napomena

The dimensions of the standard screw fittings may change slightly during the life of the catalogue as a result of optimisation processes.

Ostali podaci na upit.

Opis

Suitable for air, water, oil, steam, etc.

Dodatne informacije

Further types and dimensions on request.

Artikal

Naziv	Navoj	za veličine naglavka	L1 (mm)	SW
K- 07 40 44 22	G 1/8	I.D. 4, I.D. 6	13,0	14 mm
K- 07 40 44 23	G 1/4	I.D. 4, I.D. 6	15,0	17 mm
K- 07 40 44 24	G 3/8	I.D. 9	15,0	19 mm
K- 07 40 44 25	G 1/2	I.D. 4, I.D. 6, I.D. 9	16,0	24 mm