

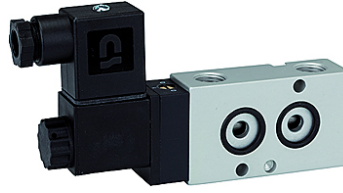
K-WV 3/2 LB NAMUR GETAUSCHT

3/2-way spool valves with NAMUR style interface, NC, ports 1 and 3 or 2 and 3 swapped

HANSA FLEX

Osobine

Mediji	Air, neutral gases, filtered
Radni pritisak	1.5 to 10 bar
Radna temperatura	-20 °C to +70 °C
Priključak na električnu mrežu	Plug connector PG 9
Sadržano u isporuci	Plug connector PG 9, 1 coding pin, 2 O-rings, 2 fixing screws
Apsorbovanje snage	3 W=/5 VA~
Kućište	Aluminium, anodised
Zasun	Stainless steel
Zaptivni materijal	NBR



Napomena

Ostali podaci na upit.

Opis

3/2 and 5/2-way spool valves, monostable, with air purging function and pneumatic spring return. With latching manual operator and optional outgoing air restriction.

Two or three-piece service units with excellent flow rates in modern design.
Lockable diaphragm pressure regulator with secondary ventilation, oil can be filled without interrupting operation.

Artikal

Naziv	Napon	Priključak	DN	Protok (L/min)
K- 07 15 00 05	230 V, 50 Hz	G 1/4	7	1250
K- 07 15 00 06	24 V DC	G 1/4	7	1250