

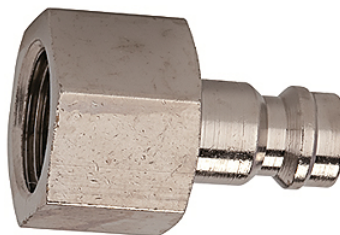
K-NIPPEL NW5 IG MS NI

Plugs DN 5, nickel-plated brass, female

HANSA FLEX

Osobine

Radni pritisak	0 - 35 bar, maximum static working pressure (non-pulsating)
Temperatura medija	-20 °C to +100 °C
Materijal	Mesing, niklovan



Napomena

Ostali podaci na upit.

Artikal

Naziv	Definicija	SW (mm)
K- 07 35 01 42	Plug G 1/8 female	14
K- 07 35 01 44	Plug G 1/4 female	17
K- 07 35 01 43	Plug G 3/8 female	19