

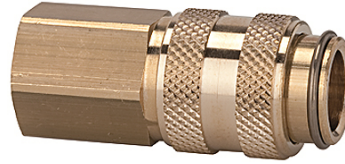
K-SVKM NW 5 ABSP IG MS

Quick disconnect couplings DN 5, both sides sealing, brass, female

HANSA FLEX

Osobine

Radni pritisak	0 - 35 bar, maximum static working pressure (non-pulsating)
Protok vazduha	310 l/min (at 6 bar and $\Delta p = 0.5$ bar)
Temperatura medija	-20 °C to +100 °C
Kućište, čaura, telo ventila	Brass
Opruga, sigurnosni prsten, kugle	stain less steel
Zaptivni materijal	NBR



Napomena

Ostali podaci na upit.

Opis

Both the coupling and the self-sealing plug are fitted with a valve. Connection: Both valves open and the medium is allowed to pass. Disconnection: Both valves close and the medium is prevented from escaping.

Artikal

Naziv	Priključak	Dužina (mm)	SW (mm)
K- 07 35 06 75	G 1/8 female	38,0	14
K- 07 35 06 76	G 1/4 female	38,0	17