

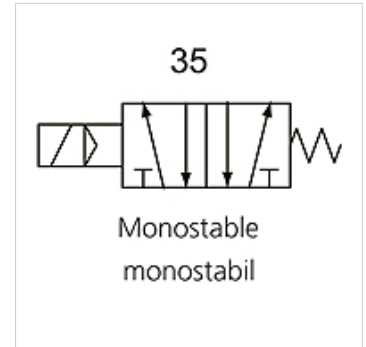
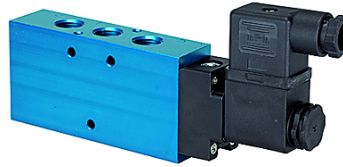
# K-WV 5/2 EINS ELEKTRO

5/2-way spool valves, single solenoid

**HANSA FLEX**

## Osobine

Funkcija	5/2-way
Radni pritisak	2.5 - 10 bar; Max. vacuum 10 bar (external pilot air)
min. radni pritisak	2,5 bar
Temperaturni opseg	-10 °C to +60 °C
Protok 6bara i 10bara	1500 NI/min (G 1/4), 4600 NI/min (G 1/2)
Priključak na električnu mrežu	Coupler plug PG 9 - form B
Vrsta zaštite	IP 65 (DIN 46244)
Kućište	Anodised aluminium, blue
Klipni razvodnik	Stainless steel
Zaptivni materijal	NBR



## Napomena

Ostali podaci na upit.

## Opis

This valve design, featuring the Tapered Tee Seal®, offers the ability to run without lubrication and supports almost any compressed air quality. The valves are largely resistant to dirt and can thus also be used under extreme conditions without any problems. Leakage is now a thing of the past and the spool no longer sticks, even after long idle periods.

## Artikal

Naziv	Priključak	Napon	DN	Broj plana uključivanja	Upravljanje
K- 07 15 02 21	G 1/4	24 V DC	8	35	
K- 07 15 02 22	G 1/2"	24 V DC	15	35	
K- 07 15 02 23	G 1/4	230 V AC, 50 Hz	8	35	
K- 07 15 02 24	G 1/2"	230 V AC, 50 Hz	15	35	