

K-RD DURCHGANGSFORM VA

Non-return valves - Straight-way type stainless steel

HANSA FLEX

Osobine

Radni pritisak 2 - 10 bar

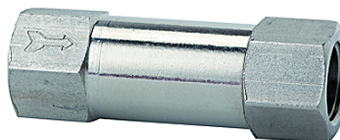
Radna temperatura -10 °C to +150 °C

Pritisak otvaranja 0.2 bar

Opruga Stainless steel 1.4319

Kućište Stainless steel 1.4404

O-prsten FKM (FPM)



Napomena

Ostali podaci na upit.

Artikal

Naziv	Navoj	Dužina (mm)	Pritisak otvaranja (bar)	SW (mm)
K- 07 30 24 28	G 1/8	40,0	0,2	13
K- 07 30 24 29	G 1/4	48,0	0,2	16