

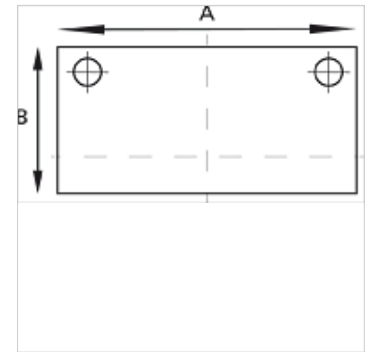
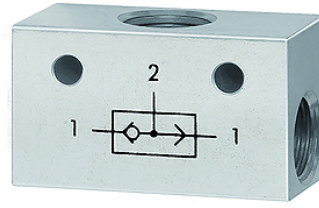
K-ODER-VENTIL

OR valves

HANSA FLEX

Osobine

Radni pritisak	2 - 10 bar
Temperaturni opseg	-10 °C to +80 °C
Protok pri 6,3 bara i Δ 1 bar	500 NI/min (G 1/8), 1300 NI/min (G 1/4)
Telo ventila	Aluminijum
Kugla	Stainless steel
Zaptivke	NBR



Napomena

Ostali podaci na upit.

Opis

The valve has two inlets and one outlet. A signal appears at the outlet when the left or right inlet is pressurised.
If the pressure at the two inlets is different, the stronger of the two signals appears at the outlet.

Artikal

Naziv	Navoj	A (mm)	B (mm)
K- 07 15 26 05	3 x G 1/8	36,0	20,0
K- 07 15 26 04	3 x G 1/4	43,0	25,0