

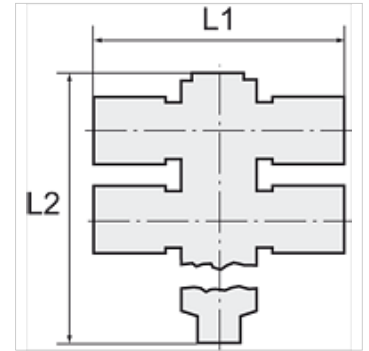
K-T-MEHRF-VERT 6 DREH

Tee distributors with inner hex, 6 outlets, swivel type, conical male thread, coated

HANSA FLEX

Osobine

Radni pritisak	Max. 15 bar, coarse vacuum
Oblast primene	Air, vacuum
preporučena creva	PU or PA (nylon)
Mediji	Compressed air and all gases or liquids that are compatible with the materials
Temperaturni opseg	-20 °C to +80 °C
Zapтивna površina	Conical version: thread coating
Materijal	Plastic, Nickel plated brass
Pritisni prsten	Plastic



Napomena

Ostali podaci na upit.

Opis

Push-in fittings series manufactured in plastic and nickel-plated brass. All parts are suitable for use with hoses, tubes or pipes made of plastic and copper.

Artikal

Naziv	Navoj	Ø mm za crevo spolja	Imbus (mm)	L1 (mm)	L2 (mm)	SW
K- 07 40 06 49	R 1/8	4 mm	4,0	45,0	59,6	14 mm
K- 07 40 06 50	R 1/8	6 mm	4,0	43,0	59,6	14 mm
K- 07 40 06 51	R 1/8	8 mm	4,0	49,0	59,6	14 mm
K- 07 40 06 46	R 1/4	6 mm	6,0	47,0	81,0	17 mm
K- 07 40 06 47	R 1/4	8 mm	6,0	52,0	81,0	17 mm
K- 07 40 06 43	R 1/4	10 mm	6,0	59,8	81,0	17 mm
K- 07 40 06 44	R 1/4	12 mm	6,0	61,6	81,0	17 mm
K- 07 40 06 55	R 3/8	8 mm	8,0	57,0	83,7	20 mm
K- 07 40 06 52	R 3/8	10 mm	8,0	63,8	83,7	20 mm
K- 07 40 06 53	R 3/8	12 mm	8,0	65,6	83,7	20 mm