

K-Y-STECK VB RED MINI

Y unions, unequal, mini

HANSA FLEX

Osobine

Radni pritisak Max. 10 bar, vacuum

Oblast primene Air, vacuum

preporučena creva PU or PA (nylon)

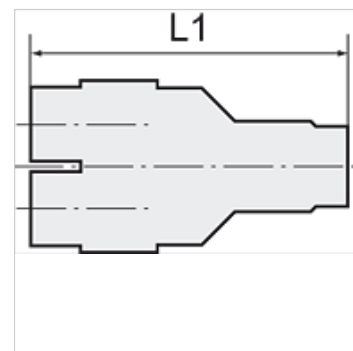
Mediji Komprimovani vazduh

Temperaturni opseg 0 °C to +60 °C

Materijal Plastic, Nickel plated brass

Pritisni prsten Plastic

Vrsta priključka



Napomena

Ostali podaci na upit.

Opis

Push-in fittings series manufactured in plastic and nickel-plated brass, space-saving miniature design.

Artikal

Naziv	Ø mm za crevo spolja	L1 (mm)
K- 07 40 50 23	4 mm / 3 mm	29,1
K- 07 40 50 24	6 mm / 4 mm	31,6