

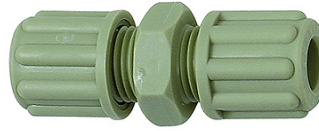
# K-SCHLAUCH VB POLYPROP

Hose connectors - polypropylene

**HANSA FLEX**

## Osobine

<b>Radni pritisak</b>	Dependent on operating temperature; Max. 10 bar (at 20 °C); Max. 2.5 bar (at 90 °C)
<b>Materijal</b>	Polypropylene (PP)
<b>Radna temperatura</b>	Max. 90 °C



## Napomena

Ostali podaci na upit.

## Opis

Chemically resistant to almost all inorganic acids and bases, even in high concentrations and at temperatures greater than 90 °C.

## Artikal

Naziv	za crevo	L1 (mm)	SW
K- 07 40 41 47	4 mm / 6 mm	39,0	14 mm
K- 07 40 41 51	6 mm / 8 mm	49,0	19 mm
K- 07 40 41 53	8 mm / 10 mm	55,0	22 mm
K- 07 40 41 55	9 mm / 12 mm	64,0	24 mm