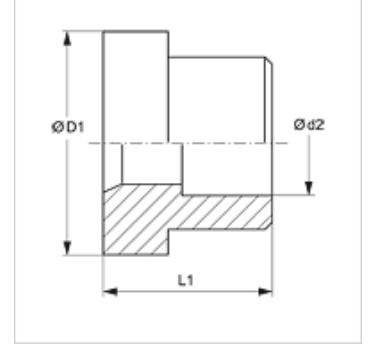


Özellikler

| | |
|----------------|---------------|
| Model | Lehim ağzları |
| Dizayn | düz |
| Malzeme | Çelik |
| Yüzey koruması | yağlı |



Ürün

| Tanım | Ø d2 (mm) | Ø D1 (mm) | L1 (mm) |
|----------------|--------------|--------------|------------|
| LOET 06 DKF 06 | 6 | 13,0 | 10,0 |
| LOET 10 DKF 08 | 8 | 16,0 | 10,0 |
| LOET 10 DKF 10 | 10 | 16,0 | 10,0 |
| LOET 13 DKF 12 | 12 | 19,0 | 10,0 |
| LOET 16 DKF 14 | 14 | 23,0 | 11,0 |
| LOET 16 DKF 15 | 15 | 23,0 | 11,0 |
| LOET 16 DKF 16 | 16 | 23,0 | 11,0 |
| LOET 20 DKF 18 | 18 | 28,0 | 14,0 |
| LOET 20 DKF 20 | 20 | 28,0 | 14,0 |
| LOET 20 DKF 22 | 22 | 28,0 | 14,0 |
| LOET 25 DKF 25 | 25 | 34,0 | 16,0 |
| LOET 32 DKF 30 | 30 | 41,0 | 16,0 |
| LOET 32 DKF 32 | 32 | 41,0 | 16,0 |
| LOET 40 DKF 35 | 35 | 49,0 | 16,0 |
| LOET 40 DKF 38 | 38 | 49,0 | 16,0 |

çap d2 = Boru dış çapı