

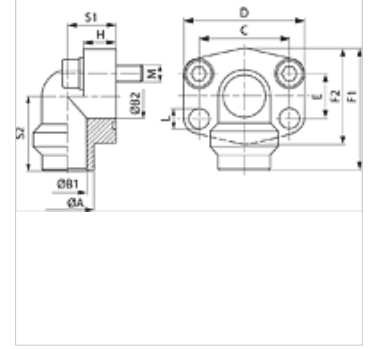
AFS 90 SRE M (3000 / 6000 PSI)

SAE Kaynak Flaşı, 90° Açılı

HANSA FLEX

Özellikler

Standart	SAE J 518 C ISO 6162
Dizayn	90° Açılı
Model	SAE kaynak flaşı
Sabitleme	Vida deliği
Teslimat kapsamı	metrik vida setli ve o-ringli
Malzeme	S355J2G3 (ST52.3)
Yüzey koruması	siyah yağlı



Açıklama

Verilen Maksimum Çalışma Basıncı, Flaşla İlgilidir! Gerçek Çalışma Basıncı, Boru (Et Kalınlığı) ve Borunun Kalitesi ile Belirlenir!

Ürün

Tanım	Basıncı serisi	PB 10.9 (bar)	Model ebadı	Boru	A	B1	B2	C	TR	E	F1	F2	H	S1	S2	L	Vidalar
					(mm)	(mm)	(mm)	(mm)	(mm)	(mm)	(mm)	(mm)	(mm)	(mm)	(mm)	(mm)	
AFS 80/90 SRE 20 M	3000 PSI	250	1/2"	20 x 3	20	14	13	38,1	54,0	17,5	60	48	16	20	37	9,0	(4 x) M 8 x 30
AFS 80/90 SRE 22 M	3000 PSI	160	1/2"	22 x 2	22	18	13	38,1	54,0	17,5	60	48	16	20	37	9,0	(4 x) M 8 x 30
AFS 80/90 SRE 25 M	3000 PSI	250	1/2"	25 x 3	25	19	13	38,1	54,0	17,5	60	48	16	20	37	9,0	(4 x) M 8 x 30
AFS 80/90 SRE 28 M	3000 PSI	160	1/2"	28 x 3	28	22	13	38,1	54,0	17,5	60	48	16	20	37	9,0	(4 x) M 8 x 30
AFS 100/90 SRE 25 M	3000 PSI	250	3/4"	25 x 3	25	19	19	47,6	65,0	22,3	63	50	18	24	38	11,0	(4 x) M 10 x 35
AFS 100/90 SRE 28 M	3000 PSI	160	3/4"	28 x 3	28	22	19	47,6	65,0	22,3	63	50	18	24	38	11,0	(4 x) M 10 x 35
AFS 100/90 SRE 30 M	3000 PSI	250	3/4"	30 x 4	30	22	19	47,6	65,0	22,3	63	50	18	24	38	11,0	(4 x) M 10 x 35
AFS 100/90 SRE 35 M	3000 PSI	160	3/4"	35 x 4	35	27	19	47,6	65,0	22,3	63	50	18	24	38	11,0	(4 x) M 10 x 35
AFS 102/90 SRE 30 M	3000 PSI	250	1"	30 x 4	30	22	25	52,4	70,0	26,2	70	60	19	28	43	11,0	(4 x) M 10 x 35
AFS 102/90 SRE 35 M	3000 PSI	160	1"	35 x 4	35	27	25	52,4	70,0	26,2	70	60	19	28	43	11,0	(4 x) M 10 x 35
AFS 102/90 SRE 38 M	3000 PSI	250	1"	38 x 4	38	30	25	52,4	70,0	26,2	70	60	19	28	43	11,0	(4 x) M 10 x 35
AFS 102/90 SRE 42 M	3000 PSI	160	1"	42 x 3	42	36	25	52,4	70,0	26,2	70	60	19	28	43	11,0	(4 x) M 10 x 35
AFS 104/90 SRE 38 M	3000 PSI	250	1.1/4"	38 x 4	38	30	32	58,7	79,0	30,2	85	68	21	34	51	11,5	(4 x) M 10 x 40
AFS 104/90 SRE 42 M	3000 PSI	160	1.1/4"	42 x 3	42	36	32	58,7	79,0	30,2	85	68	21	34	51	11,5	(4 x) M 10 x 40
AFS 104/90 SRE 48 M	3000 PSI	160	1.1/4"	48,3 x 4,5	49	39	32	58,7	79,0	30,2	85	68	21	34	51	11,5	(4 x) M 10 x 40
AFS 106/90 SRE 38 M	3000 PSI	210	1.1/2"	38 x 4	38	30	38	69,9	93,0	35,7	95	78	25	38	56	13,5	(4 x) M 12 x 45
AFS 106/90 SRE 42 M	3000 PSI	160	1.1/2"	42 x 3	42	36	38	69,9	93,0	35,7	95	78	25	38	56	13,5	(4 x) M 12 x 45
AFS 106/90 SRE 48 M	3000 PSI	160	1.1/2"	48,3 x 4,5	49	39	38	69,9	93,0	35,7	95	78	25	38	56	13,5	(4 x) M 12 x 45
AFS 108/90 SRE 60 M	3000 PSI	200	2"	60,3 x 5,6	61	49	51	77,8	110,0	42,9	110	90	25	42	65	13,5	(4 x) M 12 x 45
AFS 108/90 SRE 76 M	3000 PSI	200	2"	76,1 x 7,1	77	62	51	77,8	110,0	42,9	110	90	25	42	65	13,5	(4 x) M 12 x 45
AFS 401/90 SRE 20 M	6000 PSI	315	1/2"	20 x 3	20	14	13	40,5	56,4	18,2	60	48	16	20	37	9,0	(4 x) M 8 x 30
AFS 401/90 SRE 25 M	6000 PSI	315	1/2"	25 x 4	25	17	13	40,5	56,4	18,2	60	48	16	20	37	9,0	(4 x) M 8 x 30
AFS 402/90 SRE 25 M	6000 PSI	315	3/4"	25 x 4	25	17	19	50,8	71,3	23,8	70	60	19	28	43	11,0	(4 x) M 10 x 35
AFS 402/90 SRE 30 M	6000 PSI	315	3/4"	30 x 4	30	22	19	50,8	71,3	23,8	70	60	19	28	43	11,0	(4 x) M 10 x 35
AFS 403/90 SRE 30 M	6000 PSI	315	1"	30 x 4	30	22	25	57,2	81,0	27,8	85	70	21	34	51	13,0	(4 x) M 12 x 45
AFS 403/90 SRE 38 M	6000 PSI	315	1"	38 x 5	38	28	25	57,2	81,0	27,8	85	70	21	34	51	13,0	(4 x) M 12 x 45
AFS 404/90 SRE 38 M	6000 PSI	315	1.1/4"	38 x 5	38	28	32	66,6	95,2	31,8	95	78	25	38	56	14,5	(4 x) M 14 x 45
AFS 404/90 SRE 48 M	6000 PSI	315	1.1/4"	48,3 x 8	49	32	32	66,6	95,2	31,8	95	78	25	38	56	14,5	(4 x) M 14 x 45
AFS 405/90 SRE 38 M	6000 PSI	315	1.1/2"	38 x 5	38	28	38	79,3	112,8	36,5	110	94	25	42	65	17,0	(4 x) M 16 x 50
AFS 405/90 SRE 48 M	6000 PSI	315	1.1/2"	48,3 x 8	49	32	38	79,3	112,8	36,5	110	94	25	42	65	17,0	(4 x) M 16 x 50
AFS 405/90 SRE 60 M	6000 PSI	315	1.1/2"	60,3 x 10	61	40	38	79,3	112,8	36,5	110	94	25	42	65	17,0	(4 x) M 16 x 50
AFS 406/90 SRE 60 M	6000 PSI	315	2"	60,3 x 10	61	40	51	96,8	136,0	44,5	133	108	35	45	75	21,0	(4 x) M 20 x 110
AFS 406/90 SRE 76 M	6000 PSI	315	2"	76,1 x 12,5	74	50	51	96,8	134,0	44,5	150	106	35	45	92	21,0	(4 x) M 20 x 110

PN=Çalışma Basıncı PB=Patlama Basıncı

Ürün türleri

AFS 90 SRE (3000 PSI)	SAE Kaynak Flaşı, 90° Açılı, sadece flaş
AFS 90 SRE U (3000 / 6000 PSI)	SAE Kaynak Flaşı, 90° Açılı, UNC vida setli ve conta halkalı