

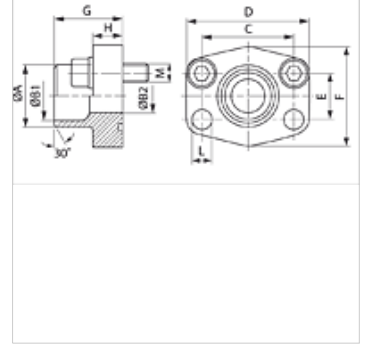
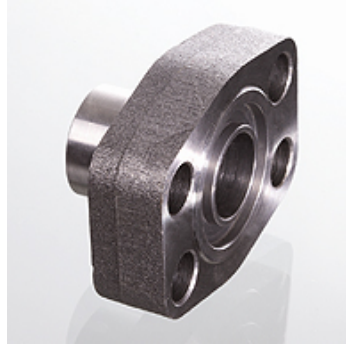
AFS SRE (3000 PSI)

SAE Kaynak Ucu

HANSA FLEX

Özellikler

Basınç serisi	3000 psi
Standart	SAE J 518 C ISO 6162
Dizayn	düz
Model	SAE Kaynak Ucu
Sabitleme	Vida deliği
Teslimat kapsamı	sadece flanş
Malzeme	S355J2G3 (ST52.3)
Yüzey koruması	siyah yağlı



Açıklama

Verilen Maksimum Çalışma Basıncı, Flanşla İlgilidir! Gerçek Çalışma Basıncı, Boru (Et Kalınlığı) ve Borunun Kalitesi ile Belirlenir!
Tavsiye Edilen Civatalar, M (metr) veya M (unc) Sütunlarında Belirtilmiştir.

Ürün

Tanım	PB 10.9 (bar)	Model ebadı	Boru	A (mm)	B1 (mm)	B2 (mm)	G (mm)	C (mm)	E (mm)	H (mm)	L (mm)	M metr.	M unc
AFS 80 SRE 20	350	1/2"	20 x 3	20	14,0	14	35,0	38,1	17,5	16,0	9,0	M 8 x 30	5/16" x 1.1/4"
AFS 80 SRE 22	350	1/2"	22 x 3	22	16,0	13	35,0	38,1	17,5	16,0	9,0	M 8 x 30	5/16" x 1.1/4"
AFS 100 SRE 25	350	3/4"	25 x 3	25	19,0	19	36,0	47,6	22,2	18,0	11,0	M 10 x 35	3/8" x 1.1/2"
AFS 100 SRE 28	350	3/4"	28 x 3	28	21,5	19	36,0	47,6	22,2	18,0	11,0	M 10 x 35	3/8" x 1.1/2"
AFS 102 SRE 30	315	1"	30 x 4	30	22,0	22	38,0	52,4	26,2	18,0	11,0	M 10 x 35	3/8" x 1.1/2"
AFS 102 SRE 35	315	1"	35 x 4	35	27,0	25	38,0	52,4	26,2	18,0	11,0	M 10 x 35	3/8" x 1.1/2"
AFS 104 SRE 38	250	1.1/4"	38 x 4	38	30,0	30	41,0	58,7	30,2	21,0	11,5	M 10 x 40	7/16" x 1.1/2"
AFS 104 SRE 42	250	1.1/4"	42 x 3	43	36,0	31	41,0	58,7	30,2	21,0	11,5	M 10 x 40	7/16" x 1.1/2"
AFS 106 SRE 38	200	1.1/2"	38 x 4	38	30,0	30	44,0	69,9	35,7	25,0	13,5	M 12 x 45	1/2" x 1.3/4"
AFS 106 SRE 42	200	1.1/2"	42 x 3	42	36,0	36	44,0	69,9	35,7	25,0	13,5	M 12 x 45	1/2" x 1.3/4"
AFS 106 SRE 48.3	200	1.1/2"	48,3 x 4,5	49	38,0	38	44,0	69,9	35,7	25,0	13,5	M 12 x 45	1/2" x 1.3/4"
AFS 108 SRE 60	200	2"	60,3 x 5,6	61	49,0	49	45,0	77,8	42,9	25,0	13,5	M 12 x 45	1/2" x 1.3/4"
AFS 110 SRE 76	160	2.1/2"	76,1 x 7,1	77	62,0	62	50,0	88,9	50,8	25,0	13,5	M 12 x 45	1/2" x 1.3/4"
AFS 112 SRE 76	160	3"	76,1 x 7,1	77	62,0	62	51,0	106,4	61,9	26,0	17,5	M 16 x 50	5/8" x 2"

PN=Çalışma Basıncı PB=Patlama Basıncı

Ürün türleri

AFS SRE M (3000 / 6000 PSI)	SAE Kaynak Ucu, metrik vida setli ve o-ringli
AFS SRE U (3000 / 6000 PSI)	SAE Kaynak Ucu, UNC vida setli ve conta halkalı