

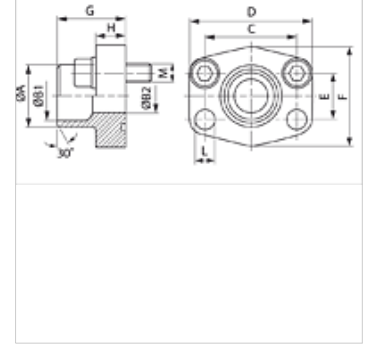
AFS SRE M (3000 / 6000 PSI)

SAE Kaynak Ucu

HANSA FLEX

Özellikler

Standart	SAE J 518 C ISO 6162
Dizayn	düz
Model	SAE Kaynak Ucu
Sabitleme	Vida deliği
Teslimat kapsamı	metrik vida setli ve o-ringli
Malzeme	S355J2G3 (ST52.3)
Yüzey koruması	siyah yağlı



Açıklama

Verilen Maksimum Çalışma Basıncı, Flanşla İlgilidir! Gerçek Çalışma Basıncı, Boru (Et Kalınlığı) ve Borunun Kalitesi ile Belirlenir!

Ürün

Tanım	Basınç serisi	PB 10.9 (bar)	Model ebadı	Boru	A (mm)	B1 (mm)	B2 (mm)	G (mm)	C (mm)	TR (mm)	E (mm)	F (mm)	H (mm)	L (mm)	M metr.
AFS 80 SRE 20 M	3000 PSI	350	1/2"	20 x 3	20	14,0	14	35,0	38,1	54	17,5	46	16,0	9,0	M 8 x 30
AFS 80 SRE 22 M	3000 PSI	350	1/2"	22 x 3	22	16,0	13	35,0	38,1	54	17,5	46	16,0	9,0	M 8 x 30
AFS 100 SRE 25 M	3000 PSI	350	3/4"	25 x 3	25	19,0	19	36,0	47,6	65	22,2	50	18,0	11,0	M 10 x 35
AFS 100 SRE 28 M	3000 PSI	350	3/4"	28 x 3	28	21,5	19	36,0	47,6	65	22,2	50	18,0	11,0	M 10 x 35
AFS 102 SRE 30 M	3000 PSI	315	1"	30 x 4	30	22,0	22	38,0	52,4	70	26,2	55	18,0	11,0	M 10 x 35
AFS 102 SRE 35 M	3000 PSI	315	1"	35 x 4	35	27,0	25	38,0	52,4	70	26,2	55	18,0	11,0	M 10 x 35
AFS 104 SRE 38 M	3000 PSI	250	1.1/4"	38 x 4	38	30,0	30	41,0	58,7	79	30,2	68	21,0	11,5	M 10 x 40
AFS 104 SRE 42 M	3000 PSI	250	1.1/4"	42 x 3	43	36,0	31	41,0	58,7	79	30,2	68	21,0	11,5	M 10 x 40
AFS 106 SRE 38 M	3000 PSI	200	1.1/2"	38 x 4	38	30,0	30	44,0	69,9	93	35,7	78	25,0	13,5	M 12 x 45
AFS 106 SRE 42 M	3000 PSI	200	1.1/2"	42 x 3	42	36,0	36	44,0	69,9	93	35,7	78	25,0	13,5	M 12 x 45
AFS 106 SRE 48 M	3000 PSI	200	1.1/2"	48,3 x 4,5	49	38,0	38	44,0	69,9	93	35,7	78	25,0	13,5	M 12 x 45
AFS 108 SRE 60 M	3000 PSI	200	2"	60,3 x 5,6	61	49,0	49	45,0	77,8	102	42,9	90	25,0	13,5	M 12 x 45
AFS 110 SRE 76 M	3000 PSI	160	2.1/2"	76,1 x 7,1	77	62,0	62	50,0	88,9	114	50,8	105	25,0	13,5	M 12 x 45
AFS 112 SRE 76 M	3000 PSI	160	3"	76,1 x 7,1	77	62,0	62	51,0	106,4	134	61,9	124	26,0	17,5	M 16 x 50
AFS 401 SRE 20 M	6000 PSI	400	1/2"	20 x 3	20	14,0	14	34,0	40,5	54	18,2	46	16,0	9,0	M 8 x 30
AFS 402 SRE 20 M	6000 PSI	400	3/4"	20 x 3	20	14,0	14	35,0	50,8	71	23,8	55	21,0	11,0	M 10 x 35
AFS 402 SRE 25 M	6000 PSI	400	3/4"	25 x 4	25	17,0	17	35,0	50,8	71	23,8	55	21,0	11,0	M 10 x 35
AFS 403 SRE 25 M	6000 PSI	400	1"	25 x 4	25	17,0	17	42,0	57,2	81	27,8	65	25,0	13,0	M 12 x 45
AFS 403 SRE 30 M	6000 PSI	400	1"	30 x 4	30	22,0	22	42,0	57,2	81	27,8	65	25,0	13,0	M 12 x 45
AFS 404 SRE 30 M	6000 PSI	400	1.1/4"	30 x 4	30	22,0	22	44,0	66,7	95	31,8	78	25,0	15,0	M 14 x 45
AFS 404 SRE 38 M	6000 PSI	400	1.1/4"	38 x 6	38	26,0	26	44,0	66,7	95	31,8	78	25,0	15,0	M 14 x 45
AFS 405 SRE 38 M	6000 PSI	400	1.1/2"	38 x 6	38	26,0	26	56,0	49,4	112	36,5	94	28,0	17,0	M 16 x 50
AFS 405 SRE 48 M	6000 PSI	400	1.1/2"	48,3 x 8	49	32,0	32	56,0	79,4	112	36,5	94	28,0	17,0	M 16 x 50
AFS 405 SRE 60 M	6000 PSI	400	1.1/2"	60,3 x 10	61	40,0	40	56,0	79,4	112	36,5	94	27,0	17,0	M 16 x 50
AFS 406 SRE 60 M	6000 PSI	400	2"	60,3 x 10	61	40,0	40	65,0	96,8	134	44,5	114	37,0	21,0	M 20 x 60
AFS 406 SRE 76 M	6000 PSI	400	2"	76,1 x 12,5	76	50,0	48	80,0	96,8	134	44,5	122	33,0	21,0	M 20 x 60

PN=Çalışma Basıncı PB=Patlama Basıncı - çap = Boru dış çapı

Ürün türleri

AFS SRE (3000 PSI)	SAE Kaynak Ucu, sadece flanş
AFS SRE U (3000 / 6000 PSI)	SAE Kaynak Ucu, UNC vida setli ve conta halkalı