

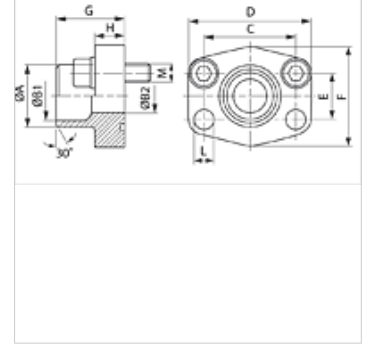
# AFS STRE M (3000 PSI)

SAE Kaynak Ucu

**HANSA FLEX**

## Özellikler

<b>Basınç serisi</b>	3000 psi
<b>Standart</b>	SAE J 518 C ISO 6162
<b>Model özelliği</b>	ND 40
<b>Dizayn</b>	düz
<b>Model</b>	SAE Kaynak Ucu
<b>Sabitlenme</b>	Vida deliği
<b>Teslimat kapsamı</b>	metrik vida setli ve o-ringli
<b>Malzeme</b>	S355J2G3 (ST52.3)
<b>Yüzey koruması</b>	siyah yağlı



## Açıklama

Verilen Maksimum Çalışma Basıncı, Flanşla İlgilidir! Gerçek Çalışma Basıncı, Boru (Et Kalınlığı) ve Borunun Kalitesi ile Belirlenir!

## Ürün

Tanım	PB 10.9 (bar)	Model ebadı	Boru	A (mm)	B1 (mm)	B2 (mm)	G (mm)	C (mm)	TR (mm)	E (mm)	F (mm)	H (mm)	L (mm)	M metr.
<b>AFS 80 STRE 21.3 M</b>	350	1/2"	21,3 x 2,6	22	16,0	13	35,0	38,1	54	17,5	46	16,0	9,0	M 8 x 30
<b>AFS 100 STRE 26.9 M</b>	350	3/4"	26,9 x 2,6	28	21,5	19	36,0	47,6	65	50,0	50	18,0	11,0	M 10 x 35
<b>AFS 102 STRE 33.7 M</b>	315	1"	33,7 x 3,2	35	27,0	25	38,0	52,4	70	26,2	55	18,0	11,0	M 10 x 35
<b>AFS 104 STRE 42.2 M</b>	250	1.1/4"	42,4 x 3,2	43	36,0	31	41,0	58,7	79	30,2	68	21,0	11,5	M 10 x 40
<b>AFS 106 STRE 48.3 M</b>	200	1.1/2"	48,3 x 3,2	49	42,0	38	44,0	69,9	93	35,7	78	25,0	13,5	M 12 x 45
<b>AFS 108 STRE 48.3 M</b>	200	2"	48,3 x 3,2	49	42,0	42	45,0	77,8	102	42,9	90	25,0	13,5	M 12 x 45
<b>AFS 108 STRE 60.3 M</b>	200	2"	60,3 x 3,6	61	53,0	49	45,0	77,8	102	42,9	90	25,0	13,5	M 12 x 45
<b>AFS 110 STRE 60.3 M</b>	160	2.1/2"	60,3 x 3,6	61	53,0	53	50,0	88,9	114	50,8	105	25,0	13,5	M 12 x 45
<b>AFS 110 STRE 76.1 M</b>	160	2.1/2"	76,1 x 3,6	77	70,0	62	50,0	88,9	114	50,8	105	25,0	13,5	M 12 x 45
<b>AFS 112 STRE 88.9 M</b>	138	3"	88,9 x 3,6	90	82,0	74	51,0	106,4	134	61,9	124	26,0	17,5	M 16 x 50
<b>AFS 114 STRE 76.1 M</b>	35	3.1/2"	76,1 x 3,6	77	70,0	70	48,0	120,7	152	69,9	136	26,0	17,5	M 16 x 50
<b>AFS 114 STRE 88.9 M</b>	35	3.1/2"	88,9 x 3,6	90	82,0	82	48,0	120,7	152	69,9	136	26,0	17,5	M 16 x 50
<b>AFS 116 STRE 114.3 M</b>	35	4"	114 x 3,6	115	107,0	102	48,0	130,2	162	77,8	146	26,0	17,5	M 16 x 50
<b>AFS 116 STRE 88.9 M</b>	35	4"	88,9 x 3,6	90	82,0	82	48,0	130,2	162	77,8	146	26,0	17,5	M 16 x 50
<b>AFS 118 STRE 139.7 M *</b>	35	5"	139,7 x 4	131	120,0	131	28,0	152,4	190	92,1	170	28,0	17,5	M 16 x 55

PN=Çalışma Basıncı PB=Patlama Basıncı - \*) AFS 118 STRE 139.7: İçine kaynaklamak için yassı flanş modeli.

## Ürün türleri

<b>AFS STRE (3000 PSI)</b>	SAE Kaynak Ucu, sadece flanş
<b>AFS STRE U (3000 PSI)</b>	SAE Kaynak Ucu, UNC vida setli ve conta halkalı