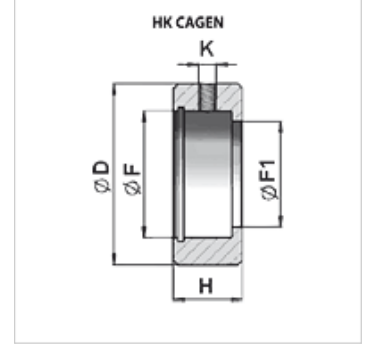
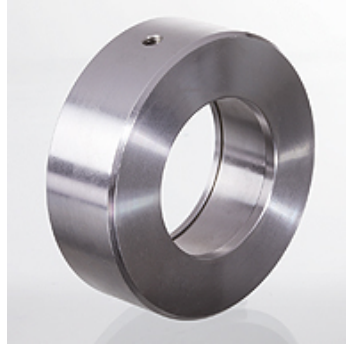


## Özellikler

Malzeme Çelik S355J0 (Fe510C)



## Ürün

Tanım	H (mm)	K	Ø D (mm)	Ø F (mm)	Ø F1 (mm)	Ağırlık (kg)
HK CAGEN 040 150 15	15	M6	40	26	22	0,09
HK CAGEN 050 190 20	19	M6	50	35	29	0,15
HK CAGEN 060 230 25	23	M6	60	42	35	0,26
HK CAGEN 070 280 30	28	M6	70	47	40	0,47
HK CAGEN 085 300 35	30	M6	85	55	47	0,79
HK CAGEN 095 350 40	35	M8	95	62	53	1,14
HK CAGEN 110 400 45	40	M8	110	68	60	1,87
HK CAGEN 120 400 50	40	M8	120	75	66	2,18
HK CAGEN 138 500 60	50	M8	138	90	80	3,40