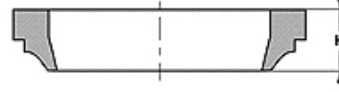
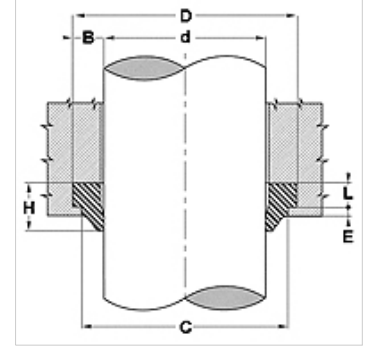


Özellikler

Model	Sıyrıcı
Kayma hızı max.	0,5 m/s
Sıcaklık min.	-30 °C
Sıcaklık max.	80 °C
Akışkanlar	Mineral yağlar
Montaj	Sıyrıcıyı böbrek şeklinde şekillendirin ve giriş somununa bastırın
Malzeme	PUR
Uygulama	Hidrolik



Toleranz / Tolerance			
d	D	C	L
h11	H11	H11	+0,20 0



Açıklama

basit montaj

aşınmaya karşı çok yüksek dayanıklılık

Ürün

Tanım	d (mm)	TR (mm)	L (mm)	C (mm)	E (mm)
DSR-P 12	12	20	4,0	18	1,0
DSR-P 16	16	24	4,0	22	1,0
DSR-P 18	18	26	4,0	24	1,0
DSR-P 20	20	28	4,0	26	1,0
DSR-P 22	22	30	4,0	28	1,0
DSR-P 25	25	33	4,0	31	1,0
DSR-P 28	28	36	4,0	34	1,0
DSR-P 30	30	38	4,0	36	1,0
DSR-P 32	32	40	4,0	38	1,0
DSR-P 35	35	43	4,0	41	1,0
DSR-P 36	36	44	4,0	42	1,0
DSR-P 40	40	48	4,0	46	1,0
DSR-P 42	42	50	4,0	48	1,0
DSR-P 45	45	53	4,0	51	1,0
DSR-P 50	50	58	4,0	56	1,0
DSR-P 55	55	63	4,0	61	1,0
DSR-P 56	56	65	4,0	62	1,0
DSR-P 60	60	68	4,0	66	1,0
DSR-P 63	63	71	4,0	69	1,0
DSR-P 65	65	73	4,0	71	1,0
DSR-P 70	70	78	4,0	76	1,0
DSR-P 75	75	83	4,0	81	1,0
DSR-P 80	80	88	4,0	86	1,0
DSR-P 85	85	93	4,0	91	1,0
DSR-P 90	90	98	4,0	96	1,0
DSR-P 95	95	103	4,0	101	1,0
DSR-P 100	100	108	4,0	106	1,0
DSR-P 110	110	122	5,5	119	1,5
DSR-P 120	120	132	5,5	129	1,5
DSR-P 125	125	137	5,5	134	1,5
DSR-P 130	130	142	5,5	139	1,5
DSR-P 135	135	147	5,5	144	1,5
DSR-P 140	140	152	5,5	149	1,5