

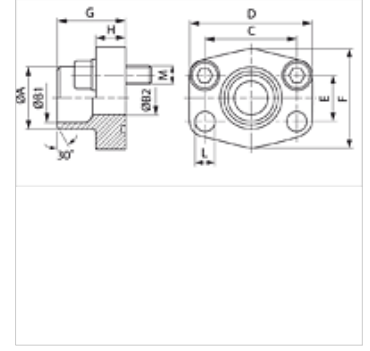
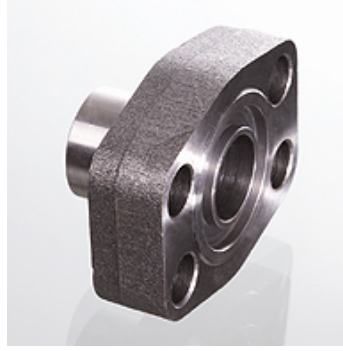
AFS SRE (6000 PSI)

SAE Kaynak Ucu

HANSA FLEX

Özellikler

Basınç serisi	6000 psi
Standart	SAE J 518 C ISO 6162
Dizayn	düz
Model	SAE Kaynak Ucu
Sabitleme	Vida deliği
Teslimat kapsamı	sadece flanş
Malzeme	S355J2G3 (ST52.3)
Yüzey koruması	siyah yağlı



Açıklama

Verilen Maksimum Çalışma Basıncı, Flanşla İlgilidir! Gerçek Çalışma Basıncı, Boru (Et Kalınlığı) ve Borunun Kalitesi ile Belirlenir!
Tavsiye Edilen Civatalar, M (metr) veya M (unc) Sütunlarında Belirtilmiştir.

Ürün

Tanım	PB 10.9 (bar)	Model ebadı	Boru	A (mm)	B1 (mm)	B2 (mm)	G (mm)	C (mm)	E (mm)	H (mm)	L (mm)	M metr.	M unc
AFS 401 SRE 20	400	1/2"	20 x 3	20	14,0	14	34,0	40,5	18,2	16,0	9,0	M 8 x 30	5/16" x 1.1/4"
AFS 402 SRE 20	400	3/4"	20 x 3	20	14,0	14	35,0	50,8	23,8	21,0	11,0	M 10 x 35	3/8" x 1.1/2"
AFS 402 SRE 25	400	3/4"	25 x 4	25	17,0	17	35,0	50,8	23,8	21,0	11,0	M 10 x 35	3/8" x 1.1/2"
AFS 403 SRE 25	400	1"	25 x 4	25	17,0	17	42,0	57,2	27,8	25,0	13,0	M 12 x 45	7/16" x 1.1/2"
AFS 403 SRE 30	400	1"	30 x 4	30	22,0	22	42,0	57,2	27,8	25,0	13,0	M 12 x 45	7/16" x 1.1/2"
AFS 404 SRE 30	400	1.1/4"	30 x 4	30	22,0	22	44,0	66,7	31,8	25,0	15,0	M 14 x 50	1/2" x 1.3/4"
AFS 404 SRE 38	400	1.1/4"	38 x 6	38	26,0	26	44,0	66,7	31,8	25,0	15,0	M 14 x 50	1/2" x 1.3/4"
AFS 405 SRE 38	400	1.1/2"	38 x 6	38	26,0	26	56,0	49,4	36,5	28,0	17,0	M 16 x 50	5/8" x 2"
AFS 405 SRE 48	400	1.1/2"	48,3 x 8	49	32,0	32	56,0	79,4	36,5	28,0	17,0	M 16 x 50	5/8" x 2"
AFS 405 SRE 60	400	1.1/2"	60,3 x 10	61	40,0	40	56,0	79,4	36,5	27,0	17,0	M 16 x 50	5/8" x 2"
AFS 406 SRE 60	400	2"	60,3 x 10	61	40,0	40	65,0	96,8	44,5	37,0	21,0	M 20 x 70	3/4" x 2.1/2"
AFS 406 SRE 76	400	2"	76,1 x 12,5	76	50,0	48	80,0	96,8	44,5	33,0	21,0	M 20 x 65	3/4" x 2.1/2"

PN=Çalışma Basıncı PB=Patlama Basıncı

Ürün türleri

AFS SRE M (3000 / 6000 PSI)	SAE Kaynak Ucu, metrik vida setli ve o-ringli
AFS SRE U (3000 / 6000 PSI)	SAE Kaynak Ucu, UNC vida setli ve conta halkalı