

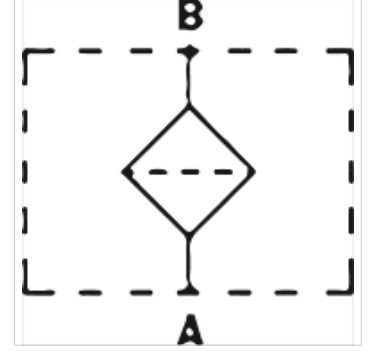
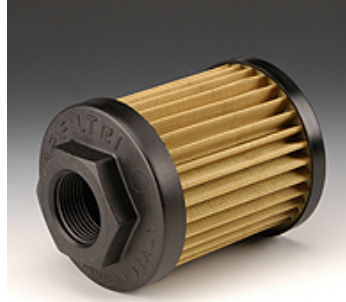
FI SG E MP

Emme filtresi MP için filtre ünitesi

HANSA FLEX

Özellikler

Model	baypas valfsız
Sıcaklık min.	-25 °C
Sıcaklık max.	110 °C
Malzeme	Conta: NBR
Çalışma basıncı	maks. 12 bar
Filter material	Tel doku



Açıklama

Bu filtreler, hidrolik pompaları depodan gelen kaba kirlere korur. Bunlar depoda gömmeli olarak monte edilir.

Siparişe ilgili bilgiler

talep üzerine teslim edilebilir: diğer filtre hassasiyetleri, diğer dişliler, baypaslı veya miknatıslı filtreler

Ürün

Tanım	Filtre hassasiyeti (µm)	Filtre alanı (cm ²)	Q _{max} (L/min)	G1	L (mm)	Ø B (mm)	SW (mm)	Ağırlık (kg)
FI SG E MP 0078 M90	90	290	20	G 3/8"	79,0	52,0	30	0,16
FI SG E MP 0078 M90 1/2	90	290	28	G 1/2"	79,0	52,0	30	0,16
FI SG E MP 0095 M90 1/2	90	470	28	G 1/2"	95,0	70,0	41	0,16
FI SG E MP 0095 M90 3/4	90	470	66	G 3/4"	95,0	70,0	41	0,22
FI SG E MP 0135 M90 1 1/4	90	1046	170	G 1.1/4"	137,0	99,0	69	0,47
FI SG E MP 0135 M90 1 1/2	90	1046	170	G 1.1/2"	137,0	99,0	69	0,47
FI SG E MP 0140 M90 3/4	90	720	66	G 3/4"	141,0	70,0	41	0,30
FI SG E MP 0140 M90 1	90	720	130	G 1"	141,0	70,0	41	0,30
FI SG E MP 0140 M250 1	250	720	900	G 1"	141,0	70,0	41	0,30
FI SG E MP 0140 M90 1 1/2	90	2000	250	G 1.1/2"	160,0	130,0	70	0,84
FI SG E MP 0140 M90 2	90	2000	470	G 2"	160,0	130,0	70	0,84
FI SG E MP 0225 M90 1 1/4	90	1850	170	G 1.1/4"	227,0	99,0	69	0,68
FI SG E MP 0225 M90 1 1/2	90	1850	250	G 1.1/2"	227,0	99,0	69	0,68
FI SG E MP 0225 M90 2	90	1850	470	G 2"	227,0	99,0	69	0,68
FI SG E MP 0262 M90 2	90	3550	470	G 2"	262,0	130,0	69	1,25
FI SG E MP 0270 M90 2 1/2	90	3550	840	G 2.1/2" -11	272,0	130,0	101	1,25
FI SG E MP 0270 M90 3	90	3620	980	G 3" -11	272,0	130,0	101	1,25
FI SG E MP 0330 M90 3	90	4160	980	G 3" -11	330,0	130,0	101	1,30

Q_{max} - maks. hacim akışı