

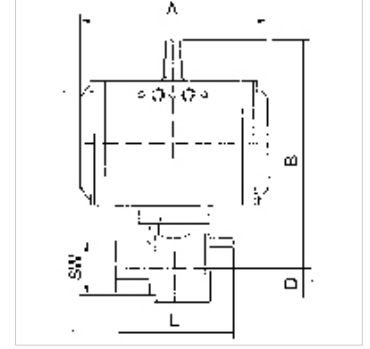
# K-BKR STELLANTR E FEDER MS

Brass ball valves, single-acting actuator - spring to close

**HANSA FLEX**

## Özellikler

<b>Model</b>	Pneumatic actuators, in double- or single acting version, with integrated end-position feedback
<b>Çalışma basıncı</b>	max. 40 bar (to DN 32); max. 25 bar (from DN 40); max. 16 bar (from DN 65)
<b>İşletim ısısı</b>	-20 °C to +70 °C
<b>Dönüş açısı</b>	90 °
<b>Kumanda basıncı</b>	5.5 bar
<b>Valf adaptörü</b>	Supplied as standard
<b>Tahrik</b>	aluminium eloxed
<b>Tahrik contası</b>	NBR
<b>Küresel vana</b>	Chrome-plated brass, with ISO-flange plate
<b>Küresel vana contası</b>	PTFE/FKM
<b>Çalıştırma</b>	



## Açıklama

Diğer bilgiler, istek üzerinedir.

## Açıklama

2-way cock, full bore

## Ürün

Tanım	DN	Mil	A (mm)	B (mm)	TR (mm)	L (mm)	SW (mm)
K- 07 30 02 27	15	Rp 1/2	133,0	142,0	17,0	75,0	26
K- 07 30 02 28	20	Rp 3/4	133,0	145,0	20,0	80,0	32
K- 07 30 02 29	25	Rp 1	133,0	148,0	25,0	90,0	41
K- 07 30 02 30	32	Rp 1 1/4	137,0	173,0	30,0	110,0	50
K- 07 30 02 31	40	Rp 1 1/2	137,0	180,0	36,0	120,0	55
K- 07 30 02 32	50	Rp 2	180,0	203,0	45,0	140,0	70
K- 07 30 02 33	65	Rp 2 1/2	209,0	230,0	57,0	155,0	83
K- 07 30 02 34	80	Rp 3	209,0	242,0	68,0	182,0	98