

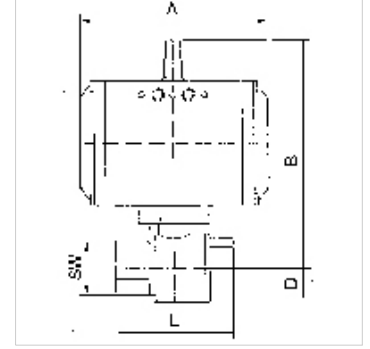
# K-BKR STELLANTR E MS

Brass ball valves, single-acting actuator - spring to open

**HANSA FLEX**

## Özellikler

Model	Pneumatic actuators, in double- or single acting version, with integrated end-position feedback
Çalışma basıncı	max. 40 bar (to DN 32); max. 25 bar (from DN 40); max. 16 bar (from DN 65)
İşletim ısısı	-20 °C to +70 °C
Dönüş açısı	90 °
Kumanda basıncı	5.5 bar
Valf adaptörü	Supplied as standard
Tahrik	aluminium eloxed
Tahrik contası	NBR
Küresel vana	Chrome-plated brass, with ISO-flange plate
Küresel vana contası	PTFE/FKM
Çalıştırma	



## Açıklama

Diğer bilgiler, istek üzerinedir.

## Açıklama

2-way cock, full bore

## Ürün

Tanım	DN	Mil	A (mm)	B (mm)	TR (mm)	L (mm)	SW (mm)
K- 07 30 02 18	15	Rp 1/2	133,0	142,0	17,0	75,0	26
K- 07 30 02 19	15	Rp 1/2	116,0	133,0	17,0	75,0	26
K- 07 30 02 20	20	Rp 3/4	133,0	145,0	20,0	80,0	32
K- 07 30 02 21	25	Rp 1	133,0	148,0	25,0	90,0	41
K- 07 30 02 22	32	Rp 1 1/4	137,0	173,0	30,0	110,0	50
K- 07 30 02 23	40	Rp 1 1/2	137,0	180,0	36,0	120,0	55
K- 07 30 02 24	50	Rp 2	180,0	203,0	45,0	140,0	70
K- 07 30 02 25	65	Rp 2 1/2	209,0	230,0	57,0	155,0	83
K- 07 30 02 26	80	Rp 3	209,0	242,0	68,0	182,0	98