

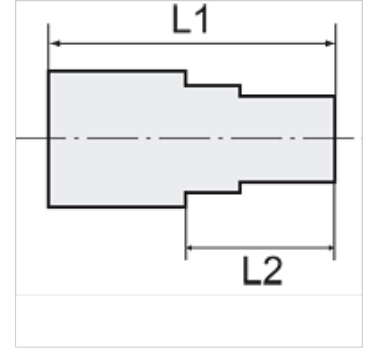
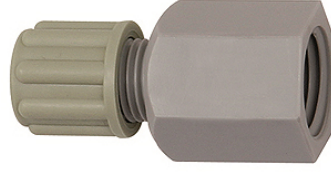
K-GAR IG

Female connectors with female G thread

HANSA FLEX

Özellikler

Çalışma basıncı	Dependent on operating temperature; Max. 10 bar (at 20 °C); Max. 1 bar (at 60 °C)
Vida bağlantısı cismi	Polyamide (PA)
Sıkıştırma halkası	Polypropylene (PP)
Somun	Polypropylene (PP)



Açıklama

Diğer bilgiler, istek üzerinedir.

Açıklama

Manufactured from high impact-resistant, UV-stabilised engineering plastic, extremely resistant to weathering. Good chemical resistance to benzene, diesel oil, fuel oil and alkalis.
Not suitable for use with acids.

Ürün

Tanım	Mil	Hortum için	L1 (mm)	L2 (mm)	SW
K- 07 40 32 46	G 1/8	4 mm / 6 mm	31,0	17,0	14 mm
K- 07 40 32 47	G 1/8	6 mm / 8 mm	36,0	21,0	17 mm
K- 07 40 32 48	G 1/8	8 mm / 10 mm	39,0	24,0	19 mm
K- 07 40 32 49	G 1/8	9 mm / 12 mm	43,0	28,0	22 mm
K- 07 40 32 50	G 1/4	4 mm / 6 mm	36,0	17,0	17 mm
K- 07 40 32 51	G 1/4	6 mm / 8 mm	41,0	21,0	17 mm
K- 07 40 32 52	G 1/4	8 mm / 10 mm	44,0	24,0	19 mm
K- 07 40 32 53	G 1/4	9 mm / 12 mm	48,0	28,0	22 mm
K- 07 40 32 54	G 3/8	4 mm / 6 mm	36,0	17,0	22 mm
K- 07 40 32 55	G 3/8	6 mm / 8 mm	41,0	21,0	22 mm
K- 07 40 32 56	G 3/8	8 mm / 10 mm	44,0	24,0	22 mm
K- 07 40 32 57	G 3/8	9 mm / 12 mm	48,0	28,0	22 mm
K- 07 40 32 58	G 1/2	4 mm / 6 mm	38,0	17,0	27 mm
K- 07 40 32 59	G 1/2	6 mm / 8 mm	42,0	21,0	27 mm
K- 07 40 32 60	G 1/2	8 mm / 10 mm	44,0	24,0	27 mm
K- 07 40 32 61	G 1/2	9 mm / 12 mm	49,0	28,0	27 mm