

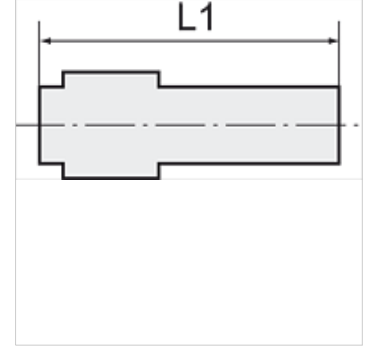
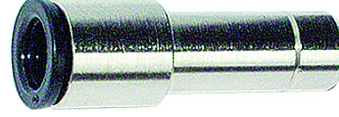
K-RD STUECKE 3 1

Reducers

HANSA FLEX

Özellikler

Çalışma basıncı	Max. 16 bar (at +20 °C)
İşletim ısısı	-20 °C to +70 °C
Malzeme	Nikel kaplı pirinç
Bastırma halkası	Hostaform (black nickel-plated for Ø 10, 12)
Conta halkası	NBR, siliconefree
Gerdirme pensesi	Stainless steel AISI 316



Açıklama

Diğer bilgiler, istek üzerinedir.

Açıklama

Economy yet very high-quality series of push-in fittings made of nickel-plated brass. Compact, space-saving, lightweight design. An O-ring in the fillet at the end of the thread guarantees a tight connection for all male thread parts, even on rough surfaces.

Ürün

Tanım	L1 (mm)	Hortum bağlantısı (mm)	Destekler (mm)
K- 07 40 29 94	30,5	4	6
K- 07 40 29 95	33,5	6	8
K- 07 40 29 96	37,5	6	10
K- 07 40 29 97	38,0	8	10