

K-TR AG-K MS NI

Male hose fittings, conical male thread - nickel-plated brass

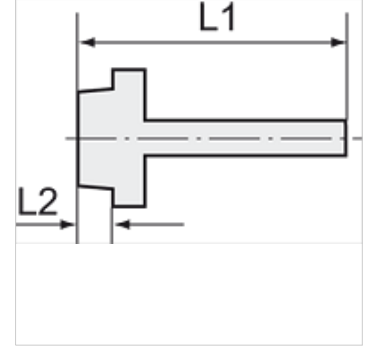
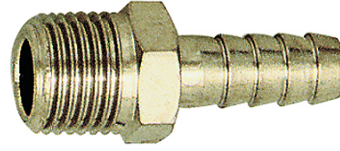
HANSA FLEX

Özellikler

İşletim ısısı Max. 150 °C

Basınç Max. 60 bar

Malzeme Nikel kaplı pirinç



Açıklama

The dimensions of the standard screw fittings may change slightly during the life of the catalogue as a result of optimisation processes. Diğer bilgiler, istek üzerinedir.

Açıklama

Suitable for air, water, oil, steam, etc.

Ek bilgiler

Further types and dimensions on request.

Ürün

Tanım	Mil	Hortum için	L1 (mm)	L2 (mm)	SW
K- 07 40 13 44	R 1/8	LW 6 mm	31,5	8,0	12 mm
K- 07 40 13 45	R 1/8	LW 8 mm	31,5	8,0	12 mm
K- 07 40 13 46	R 1/8	LW 9 mm	31,5	8,0	12 mm
K- 07 40 13 47	R 1/8	LW 10 mm	32,5	8,0	12 mm
K- 07 40 13 48	R 1/4	LW 6 mm	35,0	11,0	14 mm
K- 07 40 13 49	R 1/4	LW 8 mm	35,0	11,0	14 mm
K- 07 40 13 50	R 1/4	LW 9 mm	35,0	11,0	14 mm
K- 07 40 13 51	R 1/4	LW 10 mm	36,0	11,0	14 mm
K- 07 40 13 52	R 1/4	LW 12 mm	36,0	11,0	14 mm
K- 07 40 49 75	R 1/4	LW 13 mm	39,5	11,5	14 mm
K- 07 40 13 53	R 3/8	LW 9 mm	35,5	11,5	17 mm
K- 07 40 13 54	R 3/8	LW 10 mm	36,5	11,5	17 mm
K- 07 40 13 55	R 3/8	LW 12 mm	36,5	11,5	17 mm
K- 07 40 49 77	R 3/8	LW 13 mm	41,0	13,0	17 mm
K- 07 40 13 56	R 1/2	LW 9 mm	38,5	14,0	22 mm
K- 07 40 13 57	R 1/2	LW 10 mm	39,5	14,0	22 mm
K- 07 40 13 58	R 1/2	LW 12 mm	39,5	14,0	22 mm
K- 07 40 49 78	R 1/2	LW 13 mm	44,5	15,5	22 mm
K- 07 40 49 79	R 1/2	LW 16 mm	44,5	15,5	22 mm
K- 07 40 49 80	R 1/2	LW 19 mm	44,5	15,5	22 mm