

# K-RD NIPPEL MS NI

Reducing nipples - nickel-plated brass

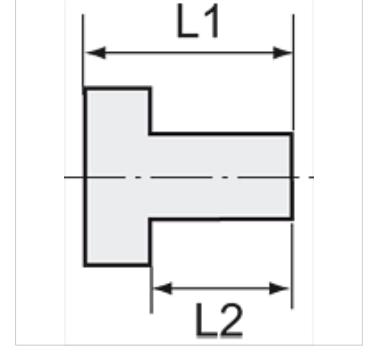
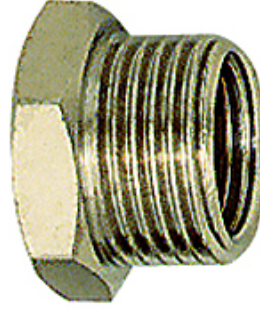
**HANSA FLEX**

## Özellikler

İşletim ısısı Max. 150 °C

Basınç Max. 60 bar

Malzeme Nikel kaplı pirinç



## Açıklama

The dimensions of the standard screw fittings may change slightly during the life of the catalogue as a result of optimisation processes. Diğer bilgiler, istek üzerinedir.

## Açıklama

Suitable for air, water, oil, steam, etc.

## Ek bilgiler

Further types and dimensions on request.

## Ürün

Tanım	Dişli dış	Dişli iç	L1 (mm)	L2 (mm)	SW
K- 07 40 15 76	G 1/8	M 5	10,5	6,0	14 mm
K- 07 40 15 77	G 1/4	G 1/8	13,0	8,0	17 mm
K- 07 40 15 81	G 3/8	G 1/8	14,0	9,0	20 mm
K- 07 40 15 78	G 3/8	G 1/4	14,0	9,0	20 mm
K- 07 40 15 83	G 1/2	G 1/8	15,5	10,0	24 mm
K- 07 40 15 82	G 1/2	G 1/4	15,5	10,0	25 mm
K- 07 40 15 79	G 1/2	G 3/8	15,5	10,0	25 mm
K- 07 40 15 84	G 3/4	G 3/8	17,5	11,0	30 mm
K- 07 40 15 85	G 3/4	G 1/2	17,5	11,0	30 mm
K- 07 40 15 86	G 1	G 1/2	19,0	12,0	36 mm
K- 07 40 15 87	G 1	G 3/4	19,0	11,5	36 mm