

K-RD NIPPEL VALUE LINE MS NI

Reducing nipples

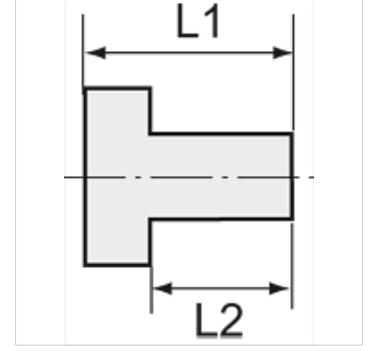
HANSA FLEX

Özellikler

maks. işletme basıncı 60 bar

maks. işletme sıcaklığı 150 °C

Malzeme Nikel kaplı piriç



Açıklama

The dimensions of the standard screw fittings may change slightly during the life of the catalogue as a result of optimisation processes. Diğer bilgiler, istek üzerinedir.

Açıklama

For air, water, steam, oil, etc.

Ürün

Tanım	Dişli dış	Dişli iç	L1 (mm)	L2 (mm)	SW
K- 07 40 15 92	G 1/8	M 5	10,5	6,0	14 mm
K- 07 40 15 93	G 1/4	G 1/8	13,0	8,0	17 mm
K- 07 40 15 96	G 3/8	G 1/8	14,0	9,0	19 mm
K- 07 40 15 94	G 3/8	G 1/4	14,0	9,0	19 mm
K- 07 40 15 98	G 1/2	G 1/8	15,5	10,0	24 mm
K- 07 40 15 97	G 1/2	G 1/4	15,5	10,0	24 mm
K- 07 40 15 95	G 1/2	G 3/8	15,5	10,0	24 mm