

K-SV VALUE LINE MS NI

Bulkhead connectors

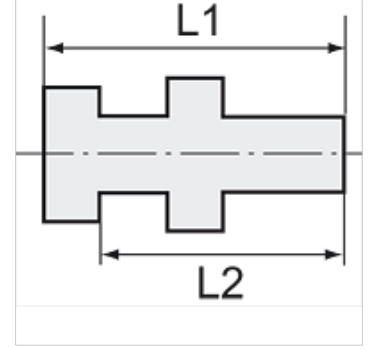
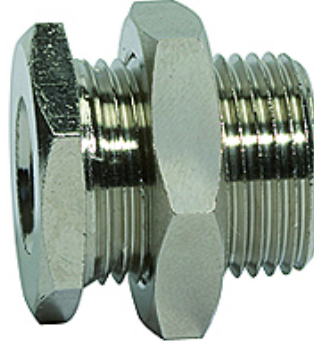
HANSA FLEX

Özellikler

maks. işletme basıncı 60 bar

maks. işletme sıcaklığı 150 °C

Malzeme Nikel kaplı piriç



Açıklama

The dimensions of the standard screw fittings may change slightly during the life of the catalogue as a result of optimisation processes.
Diğer bilgiler, istek üzerinedir.

Açıklama

For air, water, steam, oil, etc.

Ürün

Tanım	Dişli dış	Dişli iç	L1 (mm)	L2 (mm)	SW1 (mm)	SW2 (mm)
K- 07 40 34 35	M 16 x 1.5	G 1/8	18,0	14,0	19	22
K- 07 40 34 36	M 20 x 1.5	G 1/4	25,0	21,0	24	27
K- 07 40 34 37	M 26 x 1.5	G 3/8	26,0	21,0	30	32
K- 07 40 34 38	M 28 x 1.5	G 1/2	33,0	27,0	32	36