

K-VERL STUECK VALUE LINE MS NI

Extensions

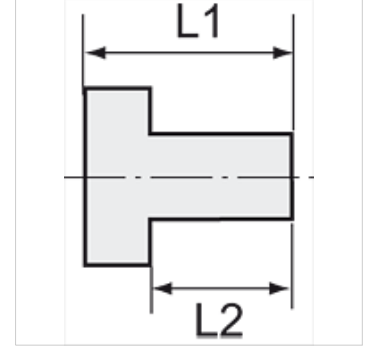
HANSA FLEX

Özellikler

maks. işletme basıncı 60 bar

maks. işletme sıcaklığı 150 °C

Malzeme Nikel kaplı pirinç



Açıklama

The dimensions of the standard screw fittings may change slightly during the life of the catalogue as a result of optimisation processes. Diğer bilgiler, istek üzerinedir.

Açıklama

For air, water, steam, oil, etc.

Ürün

| Tanım | Dişli dış | Dişli iç | L1 (mm) | L2 (mm) | SW |
|----------------|-----------|----------|------------|------------|-------|
| K- 07 40 39 23 | M 5 | G 1/8 | 14,5 | 4,0 | 14 mm |
| K- 07 40 39 24 | G 1/8 | G 1/8 | 16,0 | 6,0 | 14 mm |
| K- 07 40 39 25 | G 1/8 | G 1/4 | 19,5 | 6,0 | 17 mm |
| K- 07 40 39 26 | G 1/4 | G 1/4 | 21,5 | 8,0 | 17 mm |
| K- 07 40 39 27 | G 1/4 | G 3/8 | 22,5 | 8,0 | 22 mm |
| K- 07 40 39 28 | G 3/8 | G 3/8 | 23,5 | 9,0 | 22 mm |
| K- 07 40 39 29 | G 3/8 | G 1/2 | 27,0 | 9,0 | 24 mm |
| K- 07 40 39 30 | G 1/2 | G 1/2 | 28,0 | 10,0 | 26 mm |