

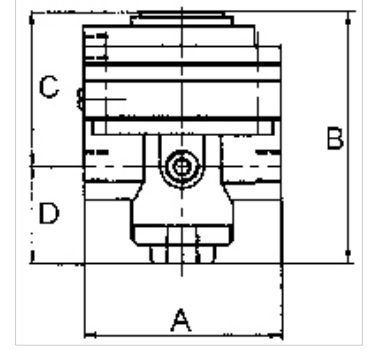
# K-PRAEZI DRUCKREGL PNEU FERN

Precision pressure regulators

**HANSA FLEX**

## Özellikler

Giriş basıncı	Max. 16 bar
Akışkan sıcaklığı	max. 60 °C
Ortam sıcaklığı	Max. 60 °C
Akışkanlar	Micro-filtered, unoiled compressed air (0.01 µm)
Bağlantı manometre	G 1/4
Akış	3000 l/min
Hava tahliye bağlantısı	G 3/8 (for mounting a silencer)
Kumanda basıncı	Max. 10 bar
Kumanda havası bağlantısı	G 1/8
Yalıtım malzemesi	NBR
Gövde	Die-cast zinc, painted black
Öz hava tüketimi	6 l/min at Pin = 16 bar



## Açıklama

Attention! A set of wearing parts cannot be supplied! These pressure regulators may only be opened in the factory! The given flow rates are based on the following parameters: 3000 l/min: P1: 5 bar, P2: 3 bar,  $\Delta p \leq 0,1$  bar.

Diğer bilgiler, istek üzerinedir.

## Açıklama

With high flow rate and large secondary relief port. Pneumatically controlled diaphragm pressure regulators with large secondary relief port for applications requiring an extremely accurate working pressure, especially at high flow rates. We recommend our »multifix« series of pilot controllers.

## Ek bilgiler

1500 l/min: P1: 10 bar, P2: 7 bar,  $\Delta p \leq 0.1$  bar.

## Ürün

Tanım	Mil	Ayar aralığı	A (mm)	B	C (mm)	TR (mm)
K- 07 25 09 35	G 1/2	0.05 - 7 bar (max. 10 bar)	82,0	108,0 mm	64,5	43,5

## Yedek Parçalar

K-HALTERBAUSATZ STANDARD	Holder
K-KM MS	Hexagonal lock nuts, brass
K-SCHALLDAEPFER VYON	Vyon silencers
K-FILTERELEMENT	Filter element
K-XV AGM 2	Double nipples, parallel male thread