

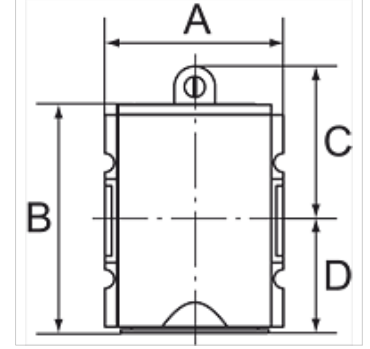
K-BEFUELLVENTIL HANSA

Filling valves (start-up valves)

HANSA FLEX

Özellikler

Giriş basıncı	2.5 - 16 bar
Sıcaklık sahası	-10 °C to +50 °C
Akışkanlar	Basınçlı hava
Bağlantı vida dişi	Material: Die-cast zinc
Gövde	Material: Grivory® (PA 66)
Akış değeri ölçümü	At P2 = 6 bar, pressure drop $\Delta p = 1$ bar



Açıklama

Diğer bilgiler, istek üzerinedir.

Açıklama

Seat valves operated by secondary pressure for controlled pressurisation of pneumatic systems. These valves prevent a sudden build-up of pressure accompanied by dangerous, jerky cylinder movements. The full cross-section of the regulator is opened at 50% of the input pressure. The filling time can be altered by turning the adjusting screw.

Ek bilgiler

See 3/2-way valves and filling units

See 3/2-way valves and filling units

Ürün

Tanım	Mil	Akış (L/min)	A (mm)	B	C (mm)	TR (mm)
K- 07 25 11 11	G 1/4	1300	52,0	78,0 mm	45,0	33,0
K- 07 25 11 12	G 3/8	1300	52,0	78,0 mm	45,0	33,0
K- 07 25 11 13	G 3/8	3400	63,0	111,5 mm	53,5	58,0
K- 07 25 11 14	G 1/2	3400	63,0	111,5 mm	53,5	58,0
K- 07 25 11 15	G 3/4	8750	85,0	112,0 mm	58,0	54,0
K- 07 25 11 16	G 1	8750	85,0	112,0 mm	58,0	54,0

Yedek Parçalar

K-HALTERBAUSATZ HANSA Holder HANSA