

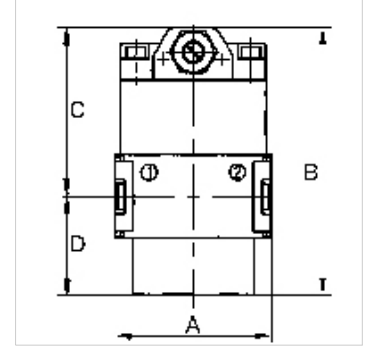
K-ANFAV MULTIFIX MINI

Start-up valves

HANSA FLEX

Özellikler

Giriş basıncı	Min. 2.5 bar, max. 16 bar
Akışkan sıcaklığı	max. 60 °C
Ortam sıcaklığı	Max. 60 °C
Akış	1600 l/min
Yalıtım malzemesi	NBR
Gövde	Die-cast zinc
Akış değeri ölçümü	At P1 = 6 bar and pressure drop $\Delta p = 1$ bar



Açıklama

If several devices in the »multifix-mini« Series are assembled together, the maximum working pressure is 12 bar.
Diğer bilgiler, istek üzerindedir.

Açıklama

Seat valves operated by secondary pressure for controlled pressurisation of pneumatic systems. The full cross-section of the regulator is opened at 50% of the input pressure. With adjustable restrictor!

Ürün

Tanım	Mil	A (mm)	B	C (mm)	TR (mm)
K- 07 25 11 53	G 1/4	45,0	77,5 mm	48,5	29,0

Aksesuar

K-HALTERBAUSATZ Holder

Yedek Parçalar

K-KOPPELPAKET MEHR Coupling packet