

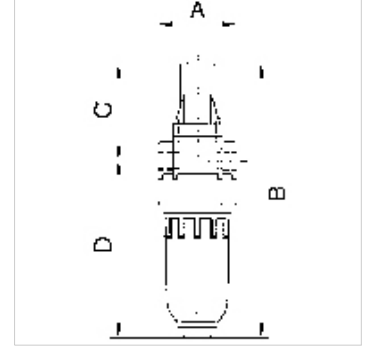
K-NEBELOELER PC-BEHAEEL STANDARD-MINI

Oil-mist lubricators with polycarbonate bowl

HANSA FLEX

Özellikler

| | |
|--------------------|--|
| Giriş basıncı | Max. 16 bar (polycarbonate bowl), Max. 25 bar (metal bowl) |
| Akışkan sıcaklığı | max. 60 °C |
| Ortam sıcaklığı | Max. 60 °C |
| Akış | 650 l/min |
| Yalıtım malzemesi | NBR |
| Gövde | Die-cast zinc, painted silver |
| Damla örtüsü | PA (polycarbonate bowl), Zinc-glass-NBR (metal bowl) |
| Yağ türü | CL 32 acc. to DIN 51517 - ISO VG 32 |
| Akış değeri ölçümü | At P1 = 6 bar and pressure drop $\Delta p = 1$ bar |
| Diğer bilgiler | User manual on request |



Açıklama

Proportional lubricators in compact design, oil can be filled under pressure.

Ürün

| Tanım | Mil | A (mm) | B | C (mm) | TR (mm) | DN |
|----------------|-------|-----------|----------|-----------|------------|----|
| K- 07 25 08 83 | G 1/8 | 40,0 | 144,5 mm | 49,5 | 95,0 | 5 |
| K- 07 25 08 85 | G 1/4 | 40,0 | 144,5 mm | 49,5 | 95,0 | 5 |

Yedek Parçalar

| | |
|------------------------------|---|
| K-ERSATZBEHAELTER MULTI MINI | Spare tank »multifix-mini« & »standard-mini« |
| K-TROPFAUFSATZ POLYCARBO | Drip attachment polycarbonate |
| K-TROPFAUFSATZ METALL | Drip attachment metal |
| K-LOESBARE DOPPELNIPPEL MS | Double nipples |
| K-XV AGM MS NI | Double nipples, parallel male thread, nickel-plated brass |