

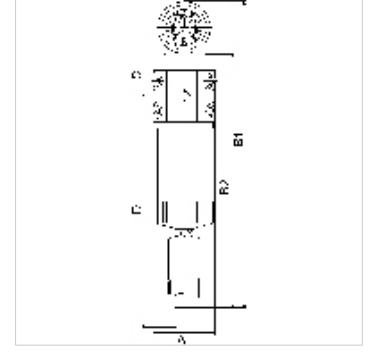
# K-VORFILTER O MANO

Pre-filters without differential pressure gauge

**HANSA FLEX**

## Özellikler

|   |  |
|---|--|
| Giriş basıncı                           | Min. 4 bar, Max. 16 bar                            |
| Gösterge alanı basınç farkı manometresi | 0 - 2 bar  |
| Mahfaza, filtre kabı                    | Aluminium  |
| Ortam sıcaklığı                         | +5 °C to +60 °C                                    |
| Filtre hassasiyeti                      | 2,00 µm  |
| Parçacık atımı                          | 2 µm   |
| Etki derecesi                           | 99,99 %  |
| Filtre parçası                          | Polyethylene (with 45% cavity)                     |
| Akış değeri ölçümü                      | At P1 = 6 bar and pressure drop $\Delta p = 0,5\%$ |



## Açıklama

Diğer bilgiler, istek üzerinedir.

## Açıklama

Suitable for all applications where the standard centrifugal separators do not afford the desired efficiency. The pre-filters and micro-filters are equipped with an automatic drain valve. All devices can be supplied with or without a differential pressure gauge. The differential pressure gauge indicates the degree of contamination of the filter element as a function of the pressure drop.

## Ürün

| Tanım          | Mil     | Akış<br>(L/min) | A<br>(mm) | B2<br>(mm) | C<br>(mm) | TR<br>(mm) |
|----------------|---------|-----------------|-----------|------------|-----------|------------|
| K- 07 25 12 94 | G 1/4   | 1000            | 82,5      | 338,0      | 57,0      | 353,0      |
| K- 07 25 12 95 | G 3/8   | 1000            | 82,5      | 338,0      | 57,0      | 353,0      |
| K- 07 25 12 96 | G 1/2   | 1000            | 82,5      | 338,0      | 57,0      | 353,0      |
| K- 07 25 12 97 | G 3/4   | 2000            | 82,5      | 408,0      | 57,0      | 493,0      |
| K- 07 25 12 98 | G 1     | 3000            | 118,0     | 423,0      | 72,0      | 458,0      |
| K- 07 25 12 99 | G 1 1/4 | 5300            | 118,0     | 523,0      | 72,0      | 658,0      |
| K- 07 25 13 00 | G 1 1/2 | 8300            | 118,0     | 623,0      | 72,0      | 858,0      |
| K- 07 25 13 01 | G 2     | 13000           | 118,0     | 813,0      | 72,0      | 1238,0     |

## Yedek Parçalar

|                           |                       |
|---------------------------|-----------------------|
| K-FILTERELEMENT SONDER    | Filter element        |
| K-VERBINDUNGELEMENTE SOND | Connecting sets       |
| K-HALTERBAUSATZ           | Holder                |
| K-AUTOMAT ABLASSVENTIL    | Automatic drain valve |