

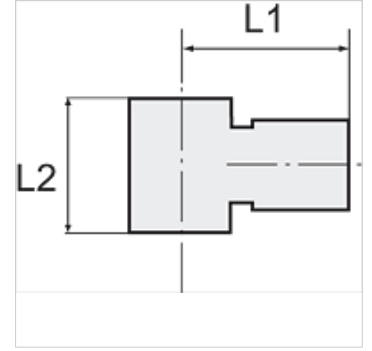
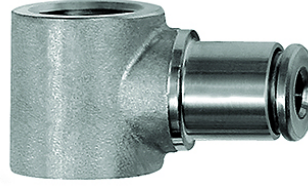
K-L-RINGSTUECK

Ring nipples, single

HANSA FLEX

Özellikler

Atar çalışma basıncı	Max. 10 bar
Basınç	Max. 15 bar (depending on pipe quality)
uygun boru malzemesi	PVDF, PTFE, stainless steel, PA, PU
Standart	G thread acc. to DIN EN ISO 228-1
Ortam sıcaklığı	-20 °C to max. +150 °C (depending on pipe quality and diameter)
Malzeme	Paslanmaz çelik 1.4404
Yalıtım malzemesi	FKM



Açıklama

Diğer bilgiler, istek üzerinedir.

Açıklama

For use with aggressive media and in areas with corrosive outside influences, in the food processing industry and in hygienic and sanitary applications.

Ürün

Tanım	Mil	Hortumun dış çapı için	L1 (mm)	L2 (mm)
K- 07 40 47 10	G 1/8	4 mm	19,5	15,0
K- 07 40 47 11	G 1/8	6 mm	22,0	15,0
K- 07 40 47 12	G 1/8	8 mm	22,5	15,0
K- 07 40 47 08	G 1/4	6 mm	23,5	17,0
K- 07 40 47 09	G 1/4	8 mm	24,0	17,0
K- 07 40 47 07	G 1/4	10 mm	27,0	17,0
K- 07 40 47 13	G 3/8	10 mm	29,0	20,0
K- 07 40 47 14	G 3/8	12 mm	31,0	20,0
K- 07 40 47 06	G 1/2	12 mm	33,0	24,0