

K-VLST K AG-K IG MS NI

Extensions, short, conical male thread, parallel female thread - nickel-plated brass

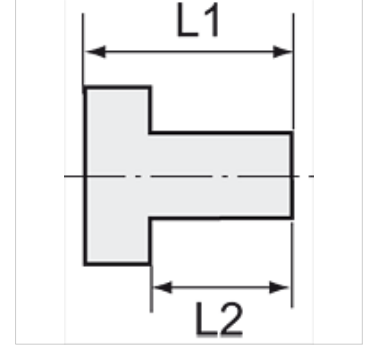
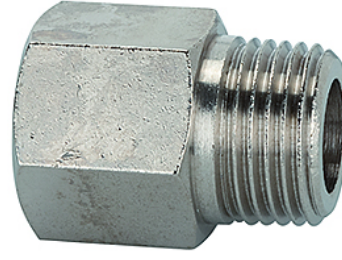
HANSA FLEX

Özellikler

İşletim ısısı Max. 150 °C

Basınç Max. 60 bar

Malzeme Nikel kaplı pirinç



Açıklama

The dimensions of the standard screw fittings may change slightly during the life of the catalogue as a result of optimisation processes. Diğer bilgiler, istek üzerinedir.

Açıklama

Suitable for air, water, oil, steam, etc.

Ek bilgiler

Further types and dimensions on request.

Ürün

| Tanım | Dişli dış | Dişli iç | L1 (mm) | L2 (mm) | SW |
|----------------|-----------|----------|---------|---------|-------|
| K- 07 40 38 91 | R 1/8 | G 1/8 | 20,0 | 8,0 | 14 mm |
| K- 07 40 38 92 | R 1/8 | G 1/4 | 22,5 | 8,0 | 17 mm |
| K- 07 40 38 98 | R 1/8 | G 3/8 | 22,5 | 8,0 | 22 mm |
| K- 07 40 38 93 | R 1/4 | G 1/4 | 25,0 | 11,0 | 17 mm |
| K- 07 40 38 94 | R 1/4 | G 3/8 | 28,5 | 11,0 | 22 mm |
| K- 07 40 38 95 | R 1/4 | G 1/2 | 29,0 | 11,0 | 24 mm |
| K- 07 40 38 96 | R 3/8 | G 3/8 | 28,5 | 11,5 | 22 mm |
| K- 07 40 38 97 | R 3/8 | G 1/2 | 32,0 | 11,5 | 24 mm |
| K- 07 40 38 99 | R 1/2 | G 1/2 | 34,0 | 14,0 | 24 mm |
| K- 07 40 39 00 | R 1/2 | G 3/4 | 35,0 | 14,0 | 32 mm |