

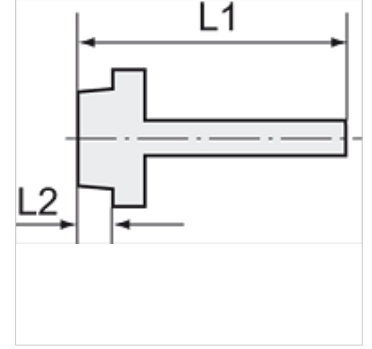
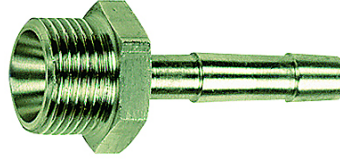
K-TR AG MS NI

Male hose fittings, parallel male thread - nickel plated brass

HANSA FLEX

Özellikler

| | |
|---------------|--------------------|
| İşletim ısısı | Max. 150 °C |
| Basınç | Max. 60 bar |
| Malzeme | Nikel kaplı pirinç |



Açıklama

The dimensions of the standard screw fittings may change slightly during the life of the catalogue as a result of optimisation processes. Diğer bilgiler, istek üzerinedir.

Açıklama

Suitable for air, water, oil, steam, etc.

Ek bilgiler

Further types and dimensions on request.

Ürün

| Tanım | Mil | Hortum için | L1 (mm) | L2 (mm) | SW |
|----------------|-------|-------------|------------|------------|-------|
| K- 07 40 49 72 | G 1/8 | LW 6 mm | 36,0 | 7,0 | 14 mm |
| K- 07 40 49 73 | G 1/8 | LW 8 mm | 36,0 | 7,0 | 14 mm |
| K- 07 40 49 74 | G 1/8 | LW 9 mm | 36,0 | 7,0 | 14 mm |
| K- 07 40 49 15 | G 1/4 | LW 4 mm | 36,0 | 9,0 | 17 mm |
| K- 07 40 49 18 | G 1/4 | LW 6 mm | 39,0 | 9,0 | 17 mm |
| K- 07 40 49 19 | G 1/4 | LW 8 mm | 39,0 | 9,0 | 17 mm |
| K- 07 40 49 23 | G 1/4 | LW 9 mm | 39,0 | 9,0 | 17 mm |
| K- 07 40 49 24 | G 1/4 | LW 10 mm | 39,0 | 9,0 | 17 mm |
| K- 07 40 49 25 | G 1/4 | LW 13 mm | 42,0 | 9,0 | 17 mm |
| K- 07 40 49 28 | G 3/8 | LW 8 mm | 39,0 | 9,0 | 19 mm |
| K- 07 40 49 32 | G 3/8 | LW 9 mm | 39,0 | 9,0 | 19 mm |
| K- 07 40 49 33 | G 3/8 | LW 10 mm | 39,0 | 9,0 | 19 mm |
| K- 07 40 49 35 | G 3/8 | LW 13 mm | 42,0 | 9,0 | 19 mm |
| K- 07 40 49 38 | G 1/2 | LW 8 mm | 42,0 | 11,0 | 24 mm |
| K- 07 40 49 41 | G 1/2 | LW 9 mm | 42,0 | 11,0 | 24 mm |
| K- 07 40 49 42 | G 1/2 | LW 10 mm | 42,0 | 11,0 | 24 mm |
| K- 07 40 49 47 | G 1/2 | LW 13 mm | 45,0 | 11,0 | 24 mm |
| K- 07 40 49 48 | G 1/2 | LW 16 mm | 53,0 | 11,0 | 24 mm |
| K- 07 40 49 49 | G 1/2 | LW 19 mm | 53,0 | 11,0 | 24 mm |
| K- 07 40 49 50 | G 3/4 | LW 13 mm | 51,0 | 12,0 | 32 mm |
| K- 07 40 49 51 | G 3/4 | LW 16 mm | 51,0 | 12,0 | 32 mm |
| K- 07 40 49 53 | G 3/4 | LW 19 mm | 54,0 | 12,0 | 32 mm |
| K- 07 40 49 55 | G 3/4 | LW 25 mm | 54,0 | 12,0 | 32 mm |
| K- 07 40 49 60 | G 1 | LW 25 mm | 49,0 | 15,0 | 34 mm |
| K- 07 40 49 68 | G 1 | LW 32 mm | 55,0 | 13,0 | 38 mm |