

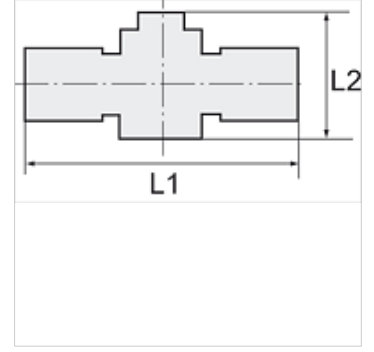
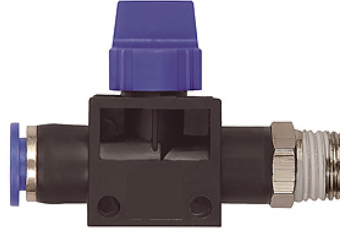
# K-WV 3/2 STECK GEW SCHL 2

3/2-way pilot valves with male thread and plug connection, flow direction from port to tube, conical male thread, coated

**HANSA FLEX**

## Özellikler

Çalışma basıncı	Max. 15 bar, coarse vacuum
Kullanım Alanı	Air, vacuum
Tavsiye edilen hortumlar	PU or PA (nylon)
Akışkanlar	Compressed air and all gases or liquids that are compatible with the materials
Sıcaklık sahası	-20 °C to +80 °C
Conta yüzeyi	Parallel version: O-ring in housing, Conical version: thread coating
Malzeme	Plastic, Nickel plated brass
Bastırma halkası	Plastic



## Açıklama

Diğer bilgiler, istek üzerinedir.

## Açıklama

Push-in fittings series manufactured in plastic and nickel-plated brass. All parts are suitable for use with hoses, tubes or pipes made of plastic and copper.

## Ürün

Tanım	Mil	Hortumun dış çapı için	L1 (mm)	L2 (mm)	SW
K- 07 40 43 95	R 1/4	10 mm	72,6	46,0	17 mm
K- 07 40 43 99	R 1/8	6 mm	58,3	41,5	12 mm
K- 07 40 44 00	R 1/8	8 mm	58,9	41,5	14 mm
K- 07 40 43 97	R 1/4	6 mm	60,8	41,5	14 mm
K- 07 40 43 98	R 1/4	8 mm	60,9	41,5	14 mm
K- 07 40 43 96	R 1/4	12 mm	73,3	46,0	21 mm
K- 07 40 44 03	R 3/8	6 mm	62,3	41,5	17 mm
K- 07 40 44 04	R 3/8	8 mm	62,4	41,5	17 mm
K- 07 40 44 01	R 3/8	10 mm	73,6	46,0	17 mm
K- 07 40 44 02	R 3/8	12 mm	74,1	46,0	21 mm
K- 07 40 43 93	R 1/2	10 mm	77,1	46,0	21 mm
K- 07 40 43 94	R 1/2	12 mm	77,3	46,0	21 mm