

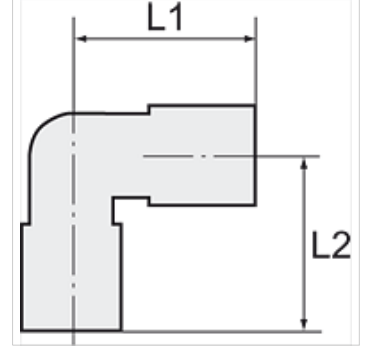
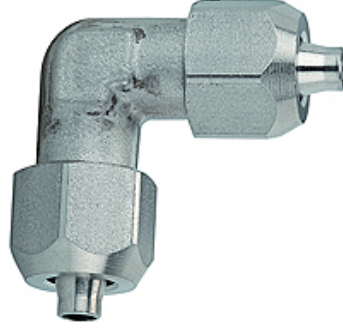
K-W90 VERBINDER VA

Union elbows, stainless steel

HANSA FLEX

Özellikler

Basınç aralığı	Max. 25 bar
tavsiye edilen hortumlar	PTFE hose
Sıcaklık sahası	-40 °C to +200 °C (depending on the hose quality and diameter)
Malzeme	Paslanmaz çelik 1.4404
Conta	Pure metal



Açıklama

Diğer bilgiler, istek üzerinedir.

Açıklama

Supplied without seals. For use with corrosive media and at high temperatures. Screw fitting series made of stainless steel for all applications where compliance with strict tightness, pressure and temperature requirements is essential. The parts are manufactured without rubber seals, in other words they are ideal for very high temperatures or for use with corrosive liquids, e.g. in cases when FPM is no longer suitable.

Ürün

Tanım	Hortum için	L1 (mm)	L2 (mm)	SW1 (mm)	SW2 (mm)
K- 07 40 30 36	6 mm / 4 mm	22,5	22,5	12	10
K- 07 40 30 37	8 mm / 6 mm	23,0	23,0	14	10
K- 07 40 30 35	10 mm / 8 mm	26,0	26,0	16	10