

K-RD NIPPEL AGRK IGR MS NI

Reducing nipples, conical male thread, parallel female thread - nickel-plated brass

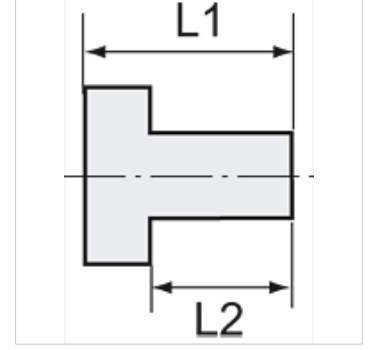
HANSA FLEX

Özellikler

İşletim ısısı Max. 150 °C

Basınç Max. 60 bar

Malzeme Nikel kaplı pirinç



Açıklama

The dimensions of the standard screw fittings may change slightly during the life of the catalogue as a result of optimisation processes. Diğer bilgiler, istek üzerinedir.

Açıklama

Suitable for air, water, oil, steam, etc.

Ek bilgiler

Further types and dimensions on request.

Ürün

Tanım	Dişli dış	Dişli iç	L1 (mm)	L2 (mm)	SW
K- 07 40 15 66	R 1/4	G 1/8	16,0	11,0	14 mm
K- 07 40 15 67	R 3/8	G 1/8	17,0	11,5	17 mm
K- 07 40 15 68	R 3/8	G 1/4	17,0	11,5	17 mm
K- 07 40 15 69	R 1/2	G 1/8	19,5	14,0	22 mm
K- 07 40 15 70	R 1/2	G 1/4	20,0	14,0	22 mm
K- 07 40 15 71	R 1/2	G 3/8	20,0	14,0	22 mm
K- 07 40 15 72	R 3/4	G 3/8	23,0	16,5	27 mm
K- 07 40 15 73	R 3/4	G 1/2	23,0	16,5	27 mm
K- 07 40 15 74	R 1	G 1/2	25,0	16,0	34 mm
K- 07 40 15 75	R 1	G 3/4	25,0	18,0	34 mm