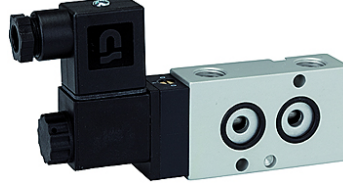


K-WV 3/2 LB NAMUR

3/2-way spool valves with NAMUR style interface, NC

HANSA FLEX



Özellikler

| | |
|-----------------------------|---|
| Akışkanlar | Air, neutral gases, filtered |
| Çalışma basıncı | 1.5 to 10 bar |
| İşletim ısısı | -20 °C to +70 °C |
| Elektrik bağlantısı | Plug connector PG 9 |
| Teslimat kapsamına dahildir | Plug connector PG 9, 1 coding pin, 2 O-rings, 2 fixing screws |
| Güç tüketimi | 3 W=/5 VA~ |
| Gövde | Aluminium, anodised |
| Sürgüler | Stainless steel |
| Yalıtım malzemesi | NBR |

Açıklama

Diğer bilgiler, istek üzerinedir.

Açıklama

3/2 and 5/2-way spool valves, monostable, with air purging function and pneumatic spring return. With latching manual operator and optional outgoing air restriction.

Two or three-piece service units with excellent flow rates in modern design.
Lockable diaphragm pressure regulator with secondary ventilation, oil can be filled without interrupting operation.

Ürün

| Tanım | Gerilim | Bağlantı | DN | Akış (L/min) |
|----------------|--------------|----------|----|--------------|
| K- 07 15 00 03 | 230 V, 50 Hz | G 1/4 | 7 | 1250 |
| K- 07 15 00 04 | 24 V DC | G 1/4 | 7 | 1250 |