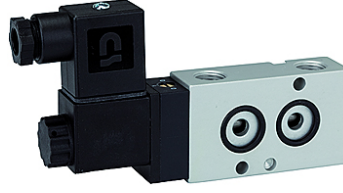


K-WV 3/2 LB NAMUR GETAUSCHT

3/2-way spool valves with NAMUR style interface, NC, ports 1 and 3 or 2 and 3 swapped

HANSA FLEX



Özellikler

Akışkanlar	Air, neutral gases, filtered
Çalışma basıncı	1.5 to 10 bar
İşletim ısısı	-20 °C to +70 °C
Elektrik bağlantısı	Plug connector PG 9
Teslimat kapsamına dahildir	Plug connector PG 9, 1 coding pin, 2 O-rings, 2 fixing screws
Güç tüketimi	3 W=/5 VA~
Gövde	Aluminium, anodised
Sürgüler	Stainless steel
Yalıtım malzemesi	NBR

Açıklama

Diğer bilgiler, istek üzerinedir.

Açıklama

3/2 and 5/2-way spool valves, monostable, with air purging function and pneumatic spring return. With latching manual operator and optional outgoing air restriction.

Two or three-piece service units with excellent flow rates in modern design.
Lockable diaphragm pressure regulator with secondary ventilation, oil can be filled without interrupting operation.

Ürün

Tanım	Gerilim	Bağlantı	DN	Akış (L/min)
K- 07 15 00 05	230 V, 50 Hz	G 1/4	7	1250
K- 07 15 00 06	24 V DC	G 1/4	7	1250