

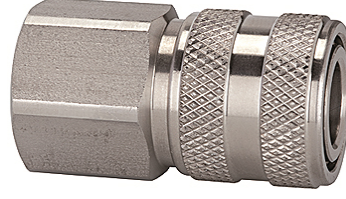
K-SVKM NW 7,2 IG VA

Quick disconnect couplings DN 7.2, stainless steel, female

HANSA FLEX

Özellikler

Çalışma basıncı	1 - 35 bar and rough vacuum
Akış hava	1.000 l/min (at 6 bar and $\Delta p = 0.5$ bar)
Akışkan sıcaklığı	-25 °C to +200 °C
Mahfaza, kovan, valf gövdesi	Stainless steel 1.4305
Yay, patlama halkası	Stainless steel 1.4310
Kilitleme pimleri	Stainless steel 1.4401
Yalıtım malzemesi	FKM



Açıklama

Diğer bilgiler, istek üzerinedir.

Açıklama

Classic standard coupling type, one side sealing, made of stainless steel. The closed sleeve protects the coupling from dirt. We recommend the use of stainless steel plugs and stems!

Ürün

Tanım	Bağlantı	Uzunluk (mm)	SW (mm)
K- 07 35 07 62	G 1/4 female	43,0	22
K- 07 35 07 63	G 3/8 female	43,0	22
K- 07 35 07 64	G 1/2 female	46,0	24

Ek elemanlar

K-NIPPEL KUPPL NW7 AG VA 2	Plugs for couplings DN 7.2 - DN 7.8, stainless steel 1.4305, male
K-NIPPEL KUPPL NW7 IG VA 1	Plugs for couplings DN 7.2 - DN 7.8, stainless steel 1.4305, female
K-TUE 7,2 7,8 VA 2	Stems for couplings DN 7.2 - DN 7.8, stainless steel 1.4305