

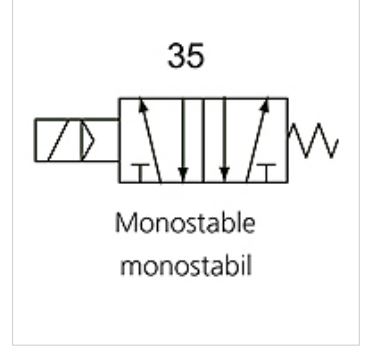
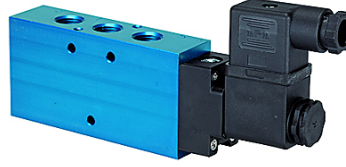
K-WV 5/2 EINS ELEKTRO

5/2-way spool valves, single solenoid

HANSA FLEX

Özellikler

İşlev	5/2-way
Çalışma basıncı	2.5 - 10 bar; Max. vacuum 10 bar (external pilot air)
min. çalışma basıncı	2,5 bar
Sıcaklık sahası	-10 °C to +60 °C
Akış 6bar ve 10bar	1500 NI/min (G 1/4), 4600 NI/min (G 1/2)
Elektrik bağlantısı	Coupler plug PG 9 - form B
Koruma sınıfı	IP 65 (DIN 46244)
Gövde	Anodised aluminium, blue
Piston sürgüsü	Stainless steel
Yalıtım malzemesi	NBR



Açıklama

Diğer bilgiler, istek üzerinedir.

Açıklama

This valve design, featuring the Tapered Tee Seal®, offers the ability to run without lubrication and supports almost any compressed air quality. The valves are largely resistant to dirt and can thus also be used under extreme conditions without any problems. Leakage is now a thing of the past and the spool no longer sticks, even after long idle periods.

Ürün

Tanım	Bağlantı	Gerilim	DN	Devre şeması numarası	Kumanda
K- 07 15 02 21	G 1/4	24 V DC	8	35	
K- 07 15 02 22	G 1/2"	24 V DC	15	35	
K- 07 15 02 23	G 1/4	230 V AC, 50 Hz	8	35	
K- 07 15 02 24	G 1/2"	230 V AC, 50 Hz	15	35	