

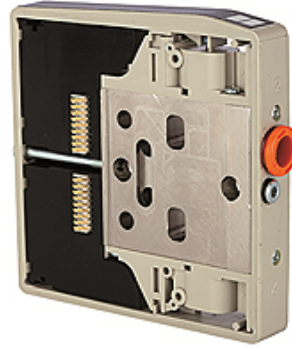
K-ZFL VENTILINSEL HDM

Intermediate plates for HDM valve terminal

HANSA FLEX

Özellikler

Akışkanlar	Filtered, unlubricated or lubricated compressed air. If lubrication is used, it must be continuous.
Çalışma basıncı	Max. vacuum 10 bar (external pilots), 3 to 7 bar (internal pilots as standard)
Kumanda basıncı	3 - 7 bar
Sıcaklık sahası	-10 °C to +60 °C
Akış	200 NI/min (Ø 4), 500 NI/min (Ø 6), 800 NI/min (Ø 8)
Kumanda sayısı	Max. 16 (e.g. 16 spring return valves)
Manüel yardımcı kumanda	Latching (bistable), Monostable (non-latching) version also available on request
Güç tüketimi	0.6 W per pilot
Koruma sınıfı	IP 65



Açıklama

Diğer bilgiler, istek üzerinedir.

Açıklama

These compact valve terminals, with a maximum flow rate of 800 NI/min, can be individually adapted to the specific conditions of each application thanks to the wide range of functions and various input and intermediate plates. Since each valve terminal is a customer-specific combination of a series of individual elements, the catalogue only lists the available input, intermediate and end plates as well as the different valve discs and the 25-pin multi-pole connectors.

Ek bilgiler

Important: The scope of supply does not include a connector. Please order separately.

Ürün

Tanım	Fonksiyon
K- 07 15 22 51	With additional pilots and exhausts
K- 07 15 22 52	With separate pilots (for multi-pressure systems)
K- 07 15 22 44	With separate exhausts (for multi-pressure system)