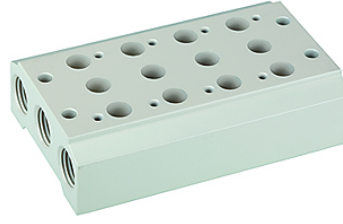


# K-MEHRFACH GRUNDPLATTE 5/2 5/3 WV

Multiple manifold bases

**HANSA FLEX**



## Açıklama

Diğer bilgiler, istek üzerinedir.

## Açıklama

Aluminium alloy manifold bases 6061-T6 for 2 to 8 valve positions.

## Ürün

| Tanım          | Tanımlama                           | valf bağlantısı için |
|----------------|-------------------------------------|----------------------|
| K- 07 15 06 66 | Manifold base for 2 valve positions | M 5, G 1/8           |
| K- 07 15 06 70 | Manifold base for 3 valve positions | M 5, G 1/8           |
| K- 07 15 06 74 | Manifold base for 4 valve positions | M 5, G 1/8           |
| K- 07 15 06 78 | Manifold base for 5 valve positions | M 5, G 1/8           |
| K- 07 15 06 82 | Manifold base for 6 valve positions | M 5, G 1/8           |
| K- 07 15 06 86 | Manifold base for 7 valve positions | M 5, G 1/8           |
| K- 07 15 06 90 | Manifold base for 8 valve positions | M 5, G 1/8           |
| K- 07 15 06 94 | Cover plate for ground plate        | M 5, G 1/8           |
| K- 07 15 06 65 | Manifold base for 2 valve positions | G 1/8, G 1/4         |
| K- 07 15 06 69 | Manifold base for 3 valve positions | G 1/8, G 1/4         |
| K- 07 15 06 73 | Manifold base for 4 valve positions | G 1/8, G 1/4         |
| K- 07 15 06 77 | Manifold base for 5 valve positions | G 1/8, G 1/4         |
| K- 07 15 06 81 | Manifold base for 6 valve positions | G 1/8, G 1/4         |
| K- 07 15 06 85 | Manifold base for 7 valve positions | G 1/8, G 1/4         |
| K- 07 15 06 89 | Manifold base for 8 valve positions | G 1/8, G 1/4         |
| K- 07 15 06 93 | Cover plate for ground plate        | G 1/8, G 1/4         |
| K- 07 15 06 67 | Manifold base for 2 valve positions | G 1/4, G 3/8         |
| K- 07 15 06 71 | Manifold base for 3 valve positions | G 1/4, G 3/8         |
| K- 07 15 06 75 | Manifold base for 4 valve positions | G 1/4, G 3/8         |
| K- 07 15 06 79 | Manifold base for 5 valve positions | G 1/4, G 3/8         |
| K- 07 15 06 83 | Manifold base for 6 valve positions | G 1/4, G 3/8         |
| K- 07 15 06 87 | Manifold base for 7 valve positions | G 1/4, G 3/8         |
| K- 07 15 06 91 | Manifold base for 8 valve positions | G 1/4, G 3/8         |
| K- 07 15 06 95 | Cover plate for ground plate        | G 1/4, G 3/8         |
| K- 07 15 06 64 | Manifold base for 2 valve positions | G 1/2                |
| K- 07 15 06 68 | Manifold base for 3 valve positions | G 1/2                |
| K- 07 15 06 72 | Manifold base for 4 valve positions | G 1/2                |
| K- 07 15 06 76 | Manifold base for 5 valve positions | G 1/2                |
| K- 07 15 06 80 | Manifold base for 6 valve positions | G 1/2                |
| K- 07 15 06 84 | Manifold base for 7 valve positions | G 1/2                |
| K- 07 15 06 88 | Manifold base for 8 valve positions | G 1/2                |
| K- 07 15 06 92 | Cover plate for ground plate        | G 1/2                |