

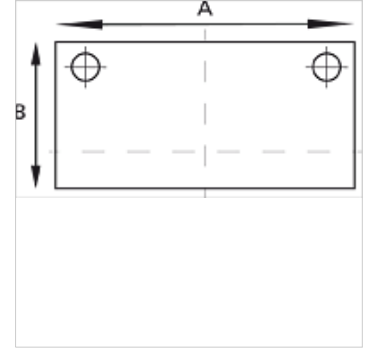
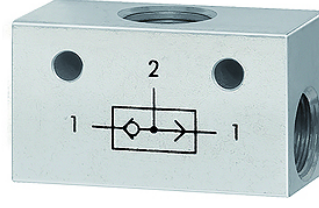
K-ODER-VENTİL

OR valves

HANSA FLEX

Özellikler

Çalışma basıncı	2 - 10 bar
Sıcaklık sahası	-10 °C to +80 °C
Akış, 6,3 bar ve Δ 1 bar	500 NI/min (G 1/8), 1300 NI/min (G 1/4)
Valf cismi	Alüminyum
Bilye	Stainless steel
Contalar	NBR



Açıklama

Diğer bilgiler, istek üzerinedir.

Açıklama

The valve has two inlets and one outlet. A signal appears at the outlet when the left or right inlet is pressurised.
If the pressure at the two inlets is different, the stronger of the two signals appears at the outlet.

Ürün

Tanım	Mil	A (mm)	B (mm)
K- 07 15 26 05	3 x G 1/8	36,0	20,0
K- 07 15 26 04	3 x G 1/4	43,0	25,0